



WES DAVIDSON
REAL ESTATE



14 Mintern Crescent Horsham VIC

3 2 2

Situated in a sought-after part of the town among other well-kept homes is this great option for the family. The neat and functional kitchen opens to the meals area that could be opened up to incorporate the sunroom, and the sunken formal lounge has a big bay window and gas heating. There are three bedrooms all with built-in robes plus an ensuite to the master, and the main bathroom has a corner spa, separate shower and powder room. Evaporative cooling and great linen storage are also on offer. Outside is a good-sized pergola, lined shed with concrete floor and power, workshop and a private backyard.

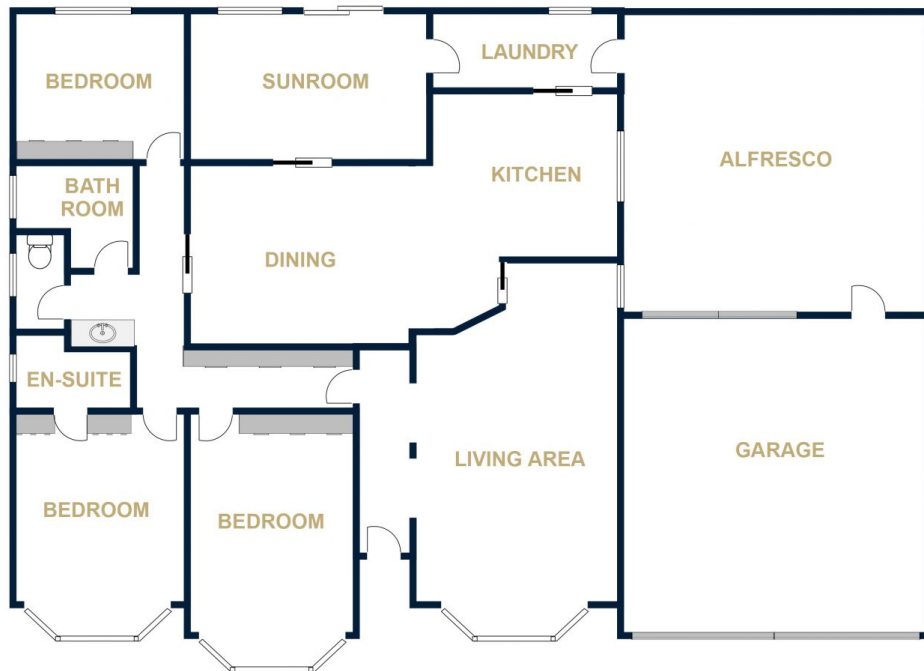
Price : \$ 290,000

View : <https://www.wdre.com.au/5630039>



WES DAVIDSON
REAL ESTATE

14 MINTERN CRESCENT
HORSHAM



FLOOR PLANS/SITE PLANS ARE INTENDED AS A GENERAL GUIDE ONLY. NO REPRESENTATIONS OR WARRANTIES OF ANY NATURE WHATSOEVER ARE GIVEN OR INTENDED AND ANY PERSON USING THIS INFORMATION SHOULD ALWAYS RELY ON THEIR OWN ENQUIRIES.