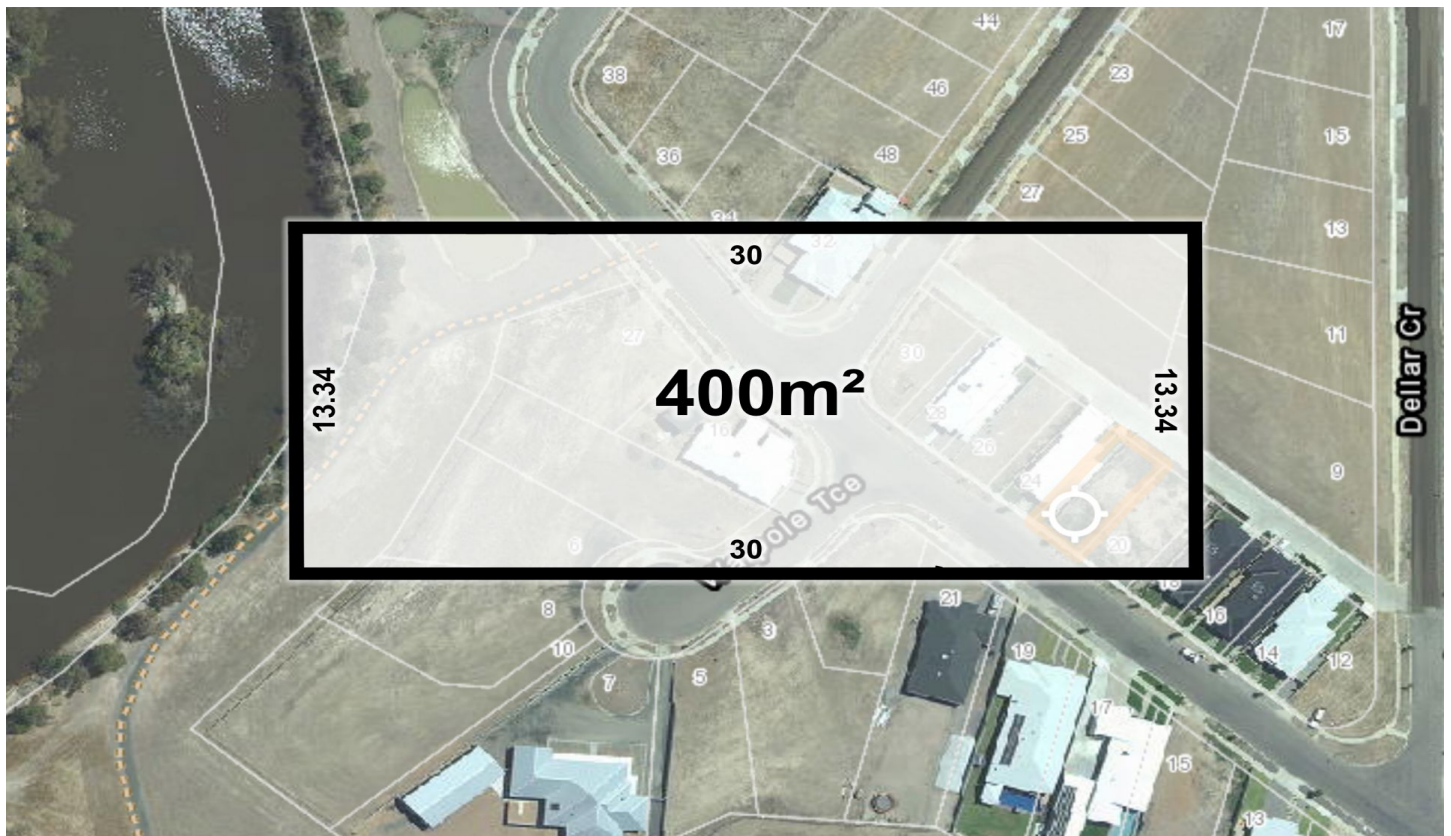




WES DAVIDSON
REAL ESTATE



22 Waterlink Esplanade Horsham VIC

Situated in a popular and fast-growing estate is this approx. 400sqm allotment, ready to build your dream home. Ideally suited for a townhouse or a low maintenance house, this block has all services available.

Price : \$ 115,000

Land Size : 400 sqm

View : <https://www.wdre.com.au/5630510>



Robert Dolan
0419440617