

**29 Wavell Street Horsham VIC**

3 1 2

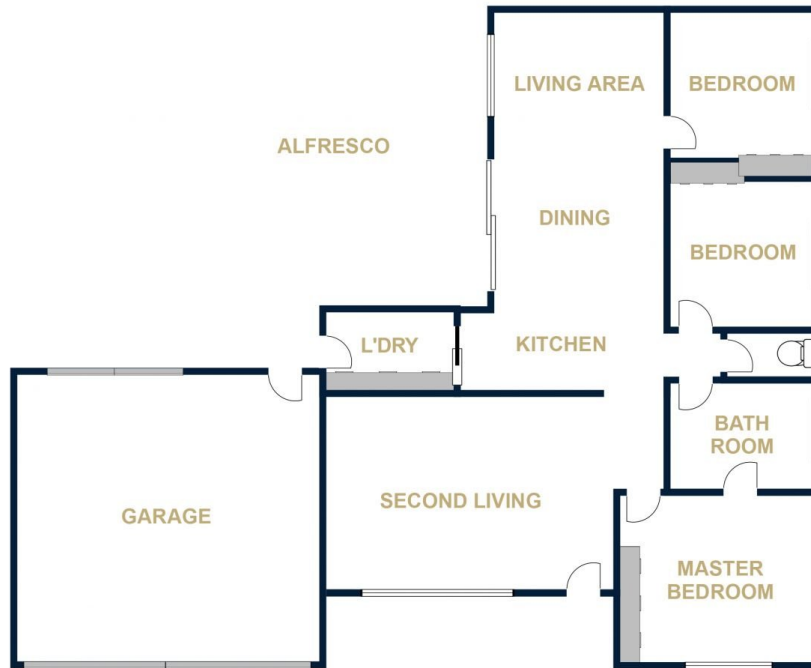
This low-maintenance brick veneer is equipped with everything that you would want, and is the ideal first home, retiree or investment property. It features an open-plan living area incorporating a functional kitchen, dining and lounge area, a separate formal lounge, built-in robes to each bedroom, and a separate shower and bath in the family bathroom with dual access to and from the master bedroom and hallway. Outside boasts an extensive pergola area, well-kept maintenance-free yard on a manageable 439m<sup>2</sup> (approx) allotment and a double lock-up garage.

**Price** : \$ 285,000

**View** : <https://www.wdre.com.au/5638485>



**Robert Dolan**  
**0419440617**



FLOOR PLANS/SITE PLANS ARE INTENDED AS A GENERAL GUIDE ONLY. NO REPRESENTATIONS OR WARRANTIES OF ANY NATURE WHATSOEVER ARE GIVEN OR INTENDED AND ANY PERSON USING THIS INFORMATION SHOULD ALWAYS RELY ON THEIR OWN ENQUIRIES.