



**WES DAVIDSON**  
REAL ESTATE



**22 Gillespie Street Horsham VIC**

3 2 4

In a fantastic location close to the hospital, Wimmera River and schools, this weatherboard home in original condition makes the perfect property for a renovation. Features include a spacious kitchen open to the living area with gas heating and evaporative cooling, an adjacent separate lounge, three bedrooms with built-in robes to two plus a fourth room ideal for use as an office, utility room or additional bedroom. Outside there is carport accommodation for three cars, a single lock-up garage and a good-sized yard.

**Price** : \$ 240,000

**View** : <https://www.wdre.com.au/5644549>

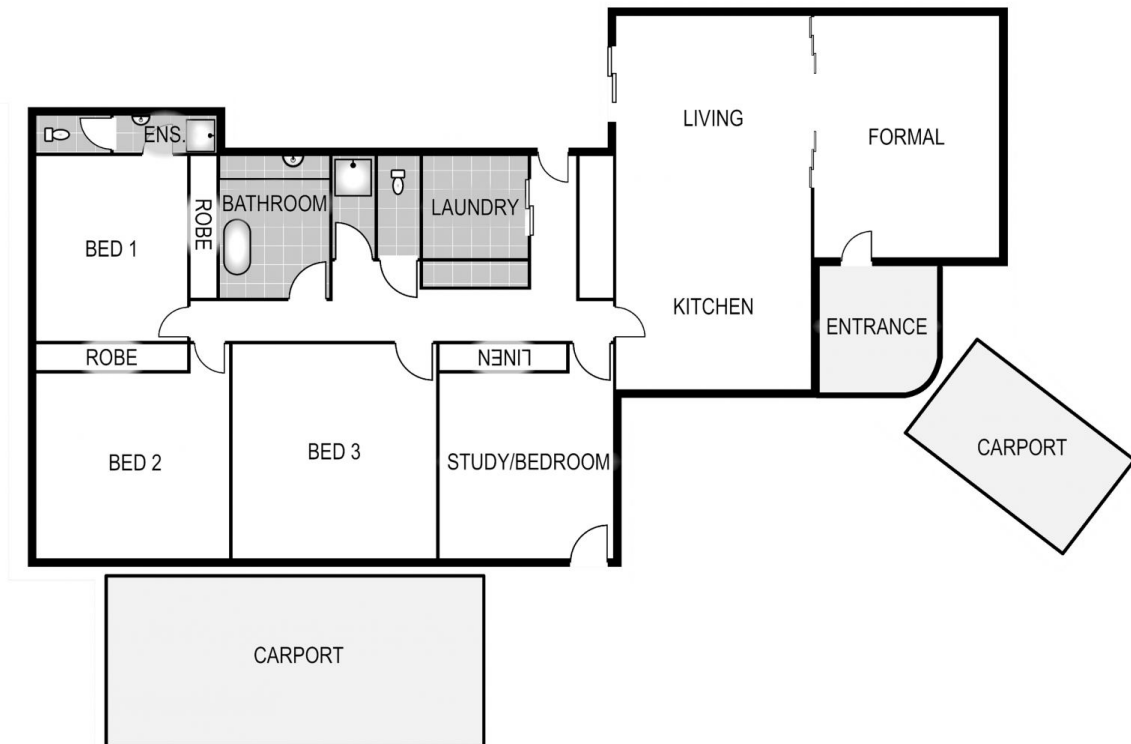


**Wes Davidson**  
**0419820000**



**WES DAVIDSON**  
REAL ESTATE

**22 Gillespie Street**  
HORSHAM



FLOOR PLANS/SITE PLANS ARE INTENDED AS A GENERAL GUIDE ONLY. NO REPRESENTATIONS OR WARRANTIES OF ANY NATURE WHATSOEVER ARE GIVEN OR INTENDED AND ANY PERSON USING THIS INFORMATION SHOULD ALWAYS RELY ON THEIR OWN ENQUIRIES.