



WES DAVIDSON
REAL ESTATE



7A Valentine Avenue Horsham VIC

2 1 1

Situated approximately 400m from the Wimmera River, this weatherboard home offers a great investment or first home opportunity. It boasts an open-plan kitchen and living area, built-in robes to each bedroom, a neat bathroom and split-system heating and cooling. Outside is a fully-fenced yard and an outdoor undercover entertaining area.

Price : \$ 180,000

View : <https://www.wdre.com.au/5647636>

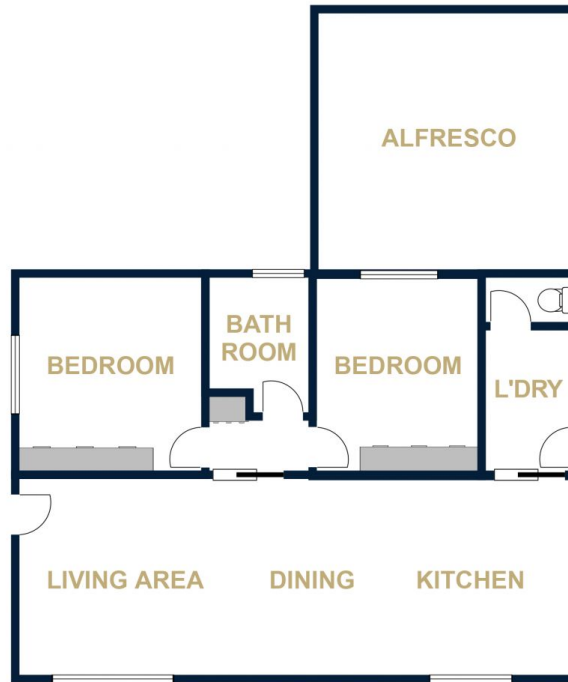


Wes Davidson
0419820000



WES DAVIDSON
REAL ESTATE

7A VALENTINE AVENUE
HORSHAM



FLOOR PLANS/SITE PLANS ARE INTENDED AS A GENERAL GUIDE ONLY. NO REPRESENTATIONS OR WARRANTIES OF ANY NATURE WHATSOEVER ARE GIVEN OR INTENDED AND ANY PERSON USING THIS INFORMATION SHOULD ALWAYS RELY ON THEIR OWN ENQUIRIES.