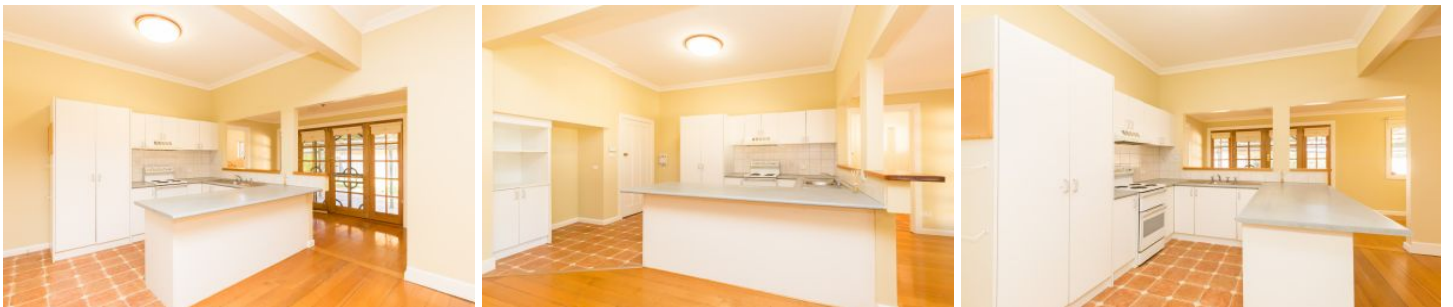




**WES DAVIDSON**  
REAL ESTATE



**21 Wilmoth Avenue Horsham VIC**

3 1 2

With a maximum street appeal, this impressive property will especially pique interest for first home buyers or families looking for a home close to schools and kindergartens. Internally it features timber floors, a wide open-plan kitchen, meals and living area with a large breakfast bench, a bright multi-purpose sunroom/study with glass french doors opening out to the extensive undercover pergola area, gas heating and evaporative air-conditioning. Outside is a generously-sized yard, double carport, good shed with concrete floor and power plus an automated sprinkler system.

**Price** : \$ 232,000

**View** : <https://www.wdre.com.au/5650757>



**WES DAVIDSON**  
REAL ESTATE

**21 WILMOTH AVENUE**  
HORSHAM

ALFRESCO



FLOOR PLANS/SITE PLANS ARE INTENDED AS A GENERAL GUIDE ONLY. NO REPRESENTATIONS OR WARRANTIES OF ANY NATURE WHATSOEVER ARE GIVEN OR INTENDED AND ANY PERSON USING THIS INFORMATION SHOULD ALWAYS RELY ON THEIR OWN ENQUIRIES.