



WES DAVIDSON
REAL ESTATE



18 Perry Drive Horsham VIC

3 2 2

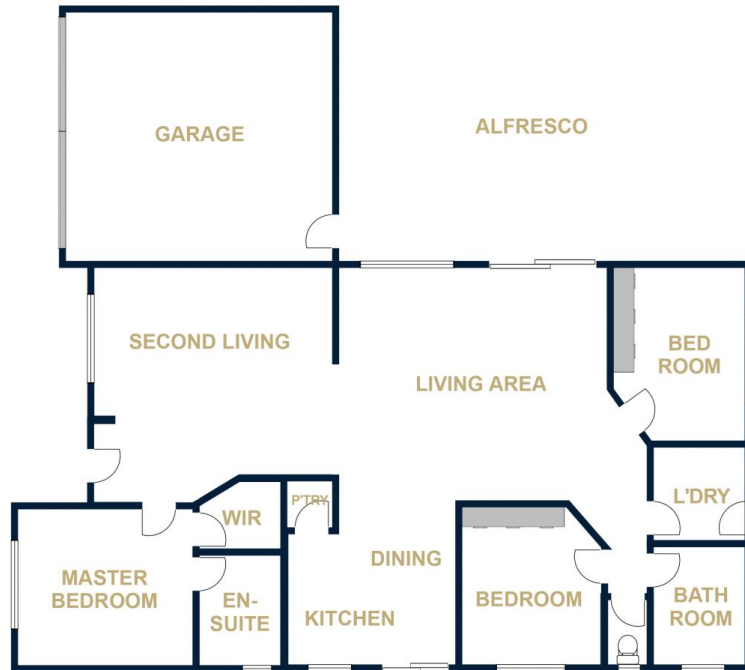
This modern three-bedroom home offers low-maintenance living and neutral tones throughout. Spacious in size, it features a central kitchen, dining and living area, a second living room upon entry to the home, an ensuite and walk-in robe to the master bedroom plus built-in robes to the remaining bedrooms. Externally this property offers extremely low maintenance surrounds with room for outdoor entertaining, side access to the yard, an approximately 15' x 20' shed and a double garage. For those seeking a home ready to move straight into, this is the one to inspect!

Price : \$ 375,000

View : <https://www.wdre.com.au/5751377>



Robert Dolan
0419440617



FLOOR PLANS/SITE PLANS ARE INTENDED AS A GENERAL GUIDE ONLY. NO REPRESENTATIONS OR WARRANTIES OF ANY NATURE WHATSOEVER ARE GIVEN OR INTENDED AND ANY PERSON USING THIS INFORMATION SHOULD ALWAYS RELY ON THEIR OWN ENQUIRIES.