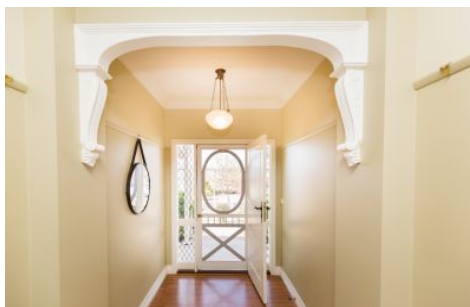




WES DAVIDSON
REAL ESTATE



12 Lawson Close Horsham VIC

3 2 2

With open-plan living in mind, this quality home has the real 'wow' factor! Bright and warm throughout, it boasts a beautiful kitchen with timber benchtops and a walk-in pantry, that overlooks the expansive dining area and through to the large lounge with an ornate mantle and gas log fire. There are three bedrooms with built-in robes to all and an ensuite to the master, spacious family bathroom with separate shower and bath plus a separate study nook. Outside offers established cottage gardens, a great alfresco area, double carport with roller doors and room for caravan or trailer parking beside the home. Only a short walk from the Wimmera River, be quick to secure this dream home!

Price : \$ 429,500

View : <https://www.wdre.com.au/5857255>



Robert Dolan
0419440617



WES DAVIDSON
REAL ESTATE

12 LAWSON CLOSE
HORSHAM



FLOOR PLANS/SITE PLANS ARE INTENDED AS A GENERAL GUIDE ONLY. NO REPRESENTATIONS OR WARRANTIES OF ANY NATURE WHATSOEVER ARE GIVEN OR INTENDED AND ANY PERSON USING THIS INFORMATION SHOULD ALWAYS RELY ON THEIR OWN ENQUIRIES.