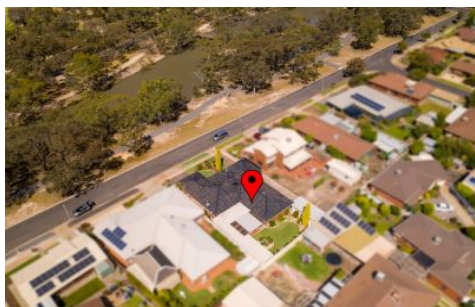




WES DAVIDSON
REAL ESTATE



21 Wotonga Drive Horsham VIC

3 2 4

Ideal for a retirement option and situated directly opposite the Wotonga Basin, next to the Wimmera River, is this very neat low-maintenance property.

It offers a bright kitchen in the heart of the home, a separate dining room, a spacious living area with a gas log heater, split-system air-conditioner and ceiling fan. There is also an additional living space with gas heating, and comfort in the warmer months is provided by the evaporative cooling throughout the home.

The well-appointed master bedroom offers a split-system air-conditioner, a ceiling fan, a walk-in robe and an ensuite, while the remaining two bedrooms each have built-in robes and ceiling fans.

Outside is an expansive pergola area with a built-in BBQ, artificial lawn, easy-to-care-for gardens, a double carport and a single garage with roller door leading through to an additional carport at the rear.

Price : \$ 600,000

View : <https://www.wdre.com.au/5914355>



Robert Dolan
0419440617



WES DAVIDSON
REAL ESTATE

21 WOTONGA DRIVE
HORSHAM



FLOOR PLANS/SITE PLANS ARE INTENDED AS A GENERAL GUIDE ONLY. NO REPRESENTATIONS OR WARRANTIES OF ANY NATURE WHATSOEVER ARE GIVEN OR INTENDED AND ANY PERSON USING THIS INFORMATION SHOULD ALWAYS RELY ON THEIR OWN ENQUIRIES.