



WES DAVIDSON
REAL ESTATE



4 Barton Drive Horsham VIC

3 2 2

Within walking distance to the tranquil Wimmera River is this neat family home, currently rented for \$380 per week. It features an open kitchen overlooking the tiled dining and living area, a separate formal lounge/dining, evaporative cooling and ducted gas heating. There are three bedrooms with a walk-in robe and ensuite to the master, built-in robes to the remaining two bedrooms, plus an additional study. Outside is an alfresco area and a double garage with rear roller door access through to the neat low-maintenance backyard.

Price : \$ 380,000

View : <https://www.wdre.com.au/5945430>

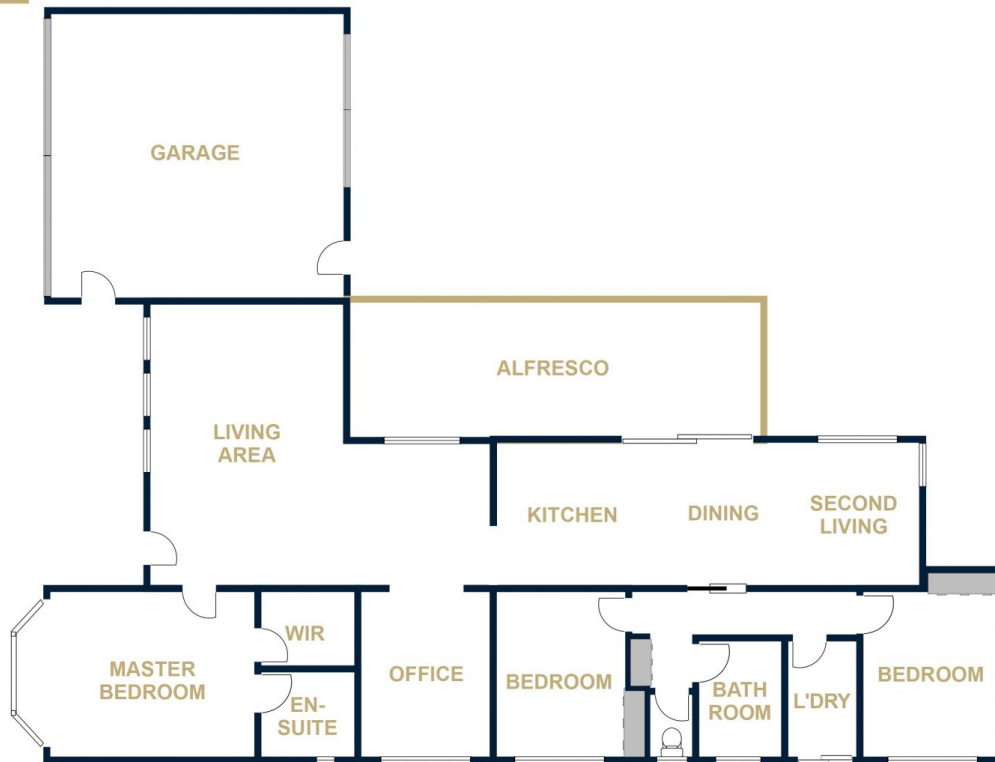


Wes Davidson
0419820000



WES DAVIDSON
REAL ESTATE

4 BARTON DRIVE
HORSHAM



FLOOR PLANS/SITE PLANS ARE INTENDED AS A GENERAL GUIDE ONLY. NO REPRESENTATIONS OR WARRANTIES OF ANY NATURE WHATSOEVER ARE GIVEN OR INTENDED AND ANY PERSON USING THIS INFORMATION SHOULD ALWAYS RELY ON THEIR OWN ENQUIRIES.