



WES DAVIDSON
REAL ESTATE



14 Wilmoth Avenue Horsham VIC

3 1

Ideal for the keen renovator or developer, this property offers approximately 1,010sqm of land suitable for development (STCA). In a popular West location, the home itself has three bedrooms, the kitchen open to dining, and an adjacent lounge room. Also offering a large shed, jump on this opportunity today!

Price : \$ 179,000

Land Size : 1010 sqm

View : <https://www.wdre.com.au/6143749>

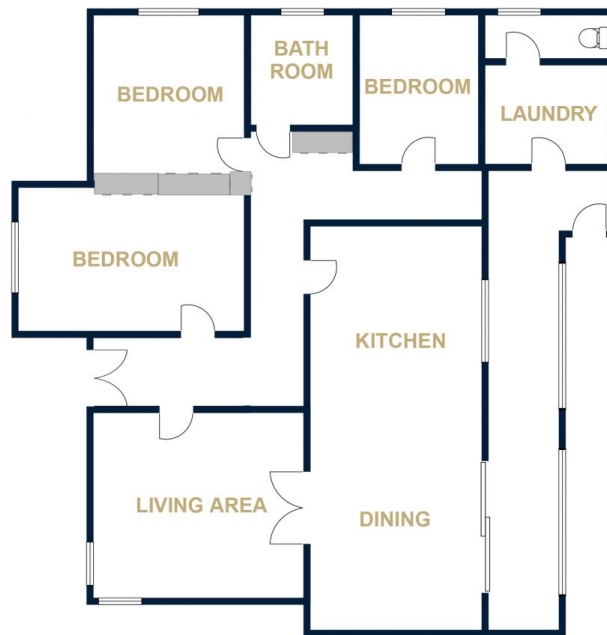


Wes Davidson
0419820000



WES DAVIDSON
REAL ESTATE

14 WILMOTH AVENUE
HORSHAM



FLOOR PLANS/SITE PLANS ARE INTENDED AS A GENERAL GUIDE ONLY. NO REPRESENTATIONS OR WARRANTIES OF ANY NATURE WHATSOEVER ARE GIVEN OR INTENDED AND ANY PERSON USING THIS INFORMATION SHOULD ALWAYS RELY ON THEIR OWN ENQUIRIES.