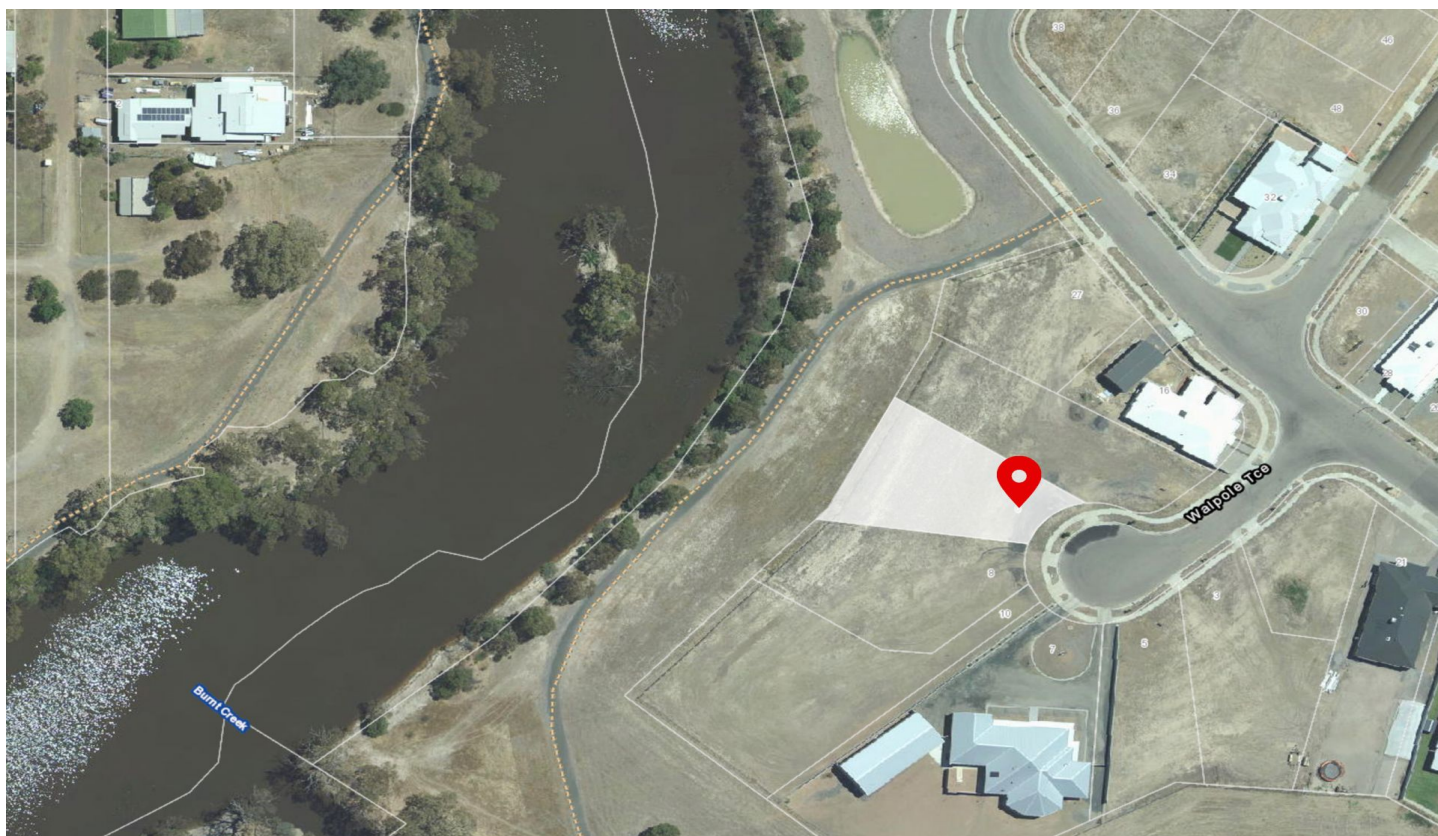




WES DAVIDSON
REAL ESTATE



6 Walpole Terrace Horsham VIC

Overlooking the Wimmera River and Burnt Creek junction offering spectacular views, this approximately 1,072sqm vacant allotment is awaiting your dream home! Close to walking tracks and parklands, take this opportunity to secure yourself a fantastic block in a prestigious area.

Price : \$ 281,000

Land Size : 1072 sqm

View : <https://www.wdre.com.au/6355642>



Robert Dolan
0419440617