



WES DAVIDSON
REAL ESTATE



7 Withell Street Horsham VIC

4 2 2

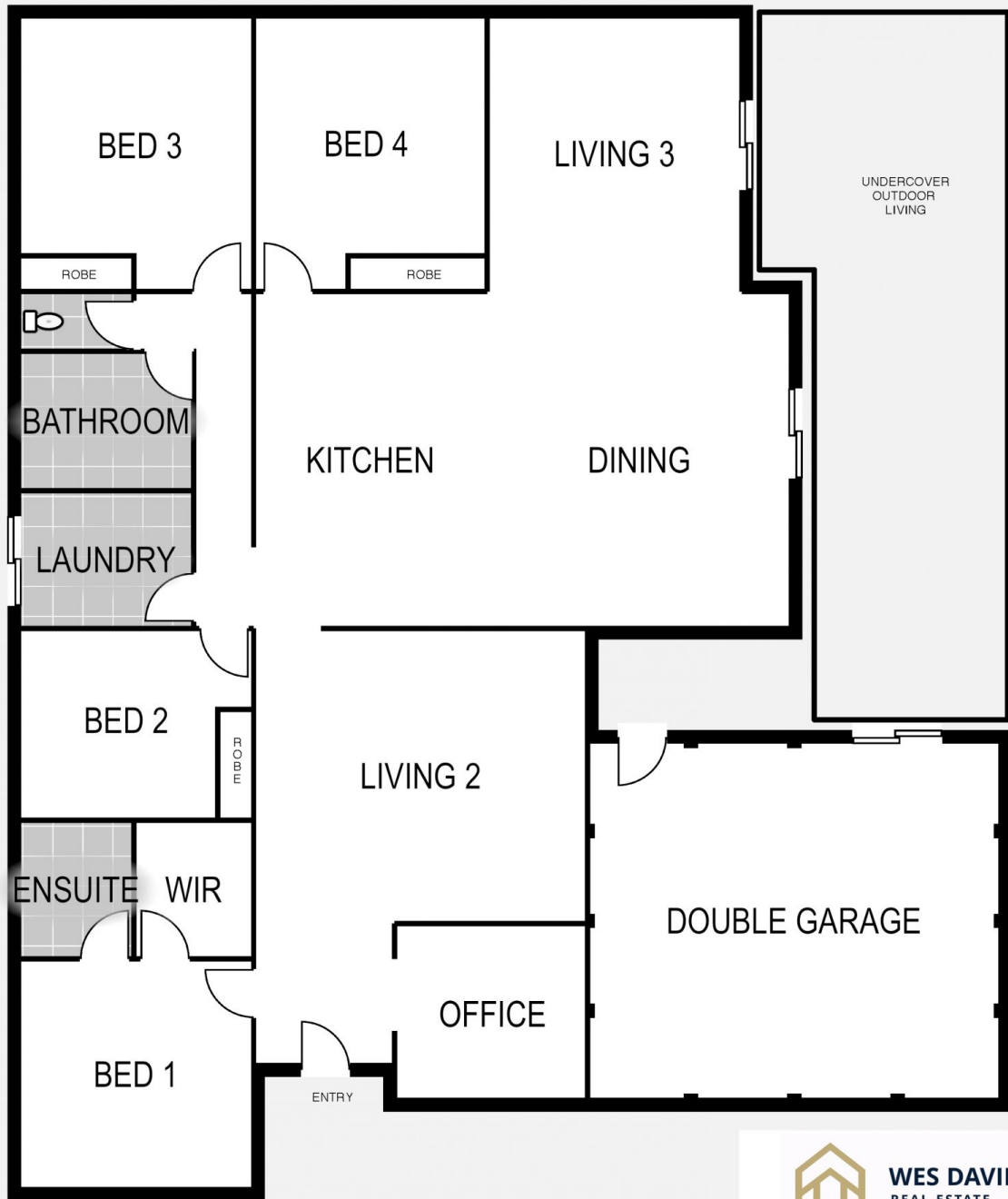
Situated in a leafy tree-lined street near the Wimmera River, this spacious home has enough room for the whole family. It boasts a bright and open kitchen overlooking the meals and lounge area, an adjacent formal living room, separate office, ducted heating plus evaporative cooling throughout, and solar power to help reduce electricity bills. The master bedroom has a walk-in robe and ensuite, with the remaining three bedrooms each offering built-in robes. Outside there is an expansive undercover pergola area, low-maintenance yard with vegetable patches and a large shed.

View : <https://www.wdre.com.au/6517724>



Wes Davidson
0419820000

7 WITHELL ST



WES DAVIDSON
REAL ESTATE

Disclaimer: Floor plans/site plans are intended as a guide only. No representations or warranties of any nature whatsoever are given or intended and any person using this information should always rely on their own enquiries.