



**WES DAVIDSON**  
REAL ESTATE



**133 Rasmussen Road Horsham VIC**

3 2 2

On the edge of Horsham, this home is set well back on the hill and enjoys wonderful views over Horsham and through to the Grampians.

Surrounded by a stunning garden, this contemporarily-designed home (circa 1970's) commands your attention as you drive up the long circular driveway to find the home perched at the top, with the master bedroom begging for a balcony to extend its already tremendous view.

The kitchen has been renovated well, and the spacious living areas will suit an active family.

The bedrooms are all generous in size, and there is also a separate study.

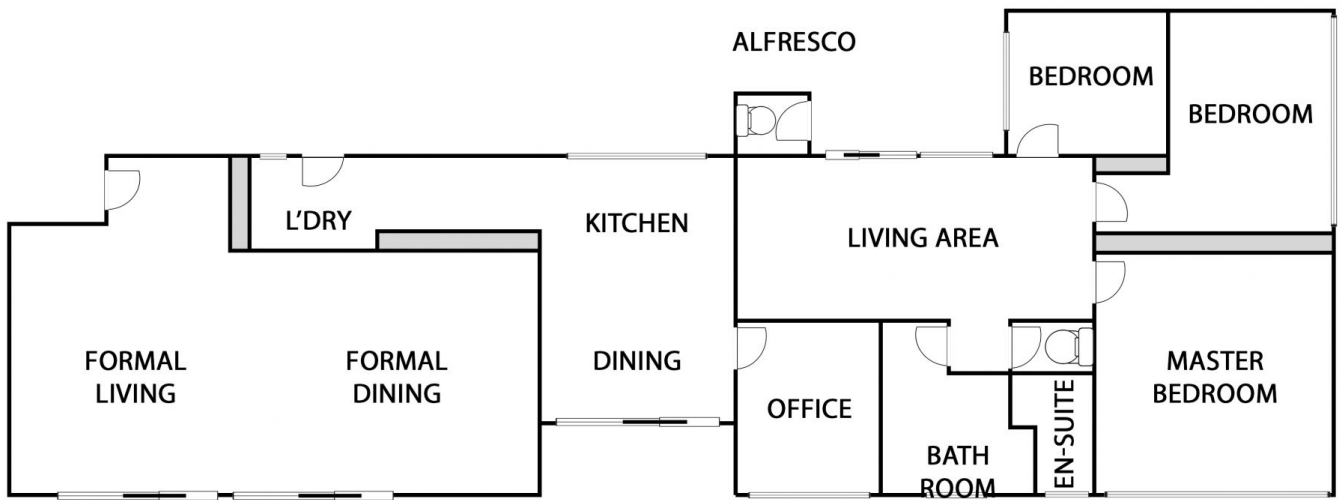
An abundance of shedding on the property preexists and the paddocks to the rear have been cropped.

**Land Size** : 139293 sqm

**View** : <https://www.wdre.com.au/6517736>



**Wes Davidson**  
**0419820000**



**133 Rasmussen Road, Horsham**