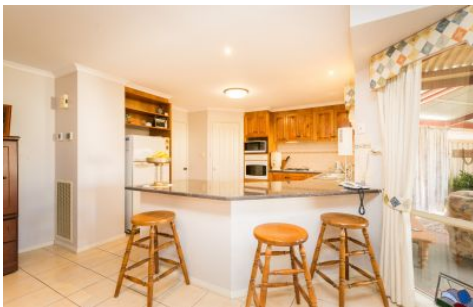




WES DAVIDSON
REAL ESTATE



5 McTavish Boulevard Horsham VIC

4 2 2

At the entrance to popular Southbank surrounded by quality homes sits this stately residence with wide-ranging appeal. Thoughtfully-designed with architectural elements throughout, this is not a home to be found elsewhere. Boasting four bedrooms with a walk-in robe and ensuite to the master, a dedicated study, formal lounge and quality timber kitchen overlooking the family/meals area and the enclosed alfresco. The double garage and quality shed with vehicle access via a concealed driveway provide plenty of options for vehicle and caravan storage. With so much to offer, your early inspection is encouraged.

Price : \$ 435,000

View : <https://www.wdre.com.au/6517792>



Wes Davidson
0419820000



WES DAVIDSON
REAL ESTATE

5 MCTAVISH BOULEVARD
HORSHAM



FLOOR PLANS/SITE PLANS ARE INTENDED AS A GENERAL GUIDE ONLY. NO REPRESENTATIONS OR WARRANTIES OF ANY NATURE WHATSOEVER ARE GIVEN OR INTENDED AND ANY PERSON USING THIS INFORMATION SHOULD ALWAYS RELY ON THEIR OWN ENQUIRIES.