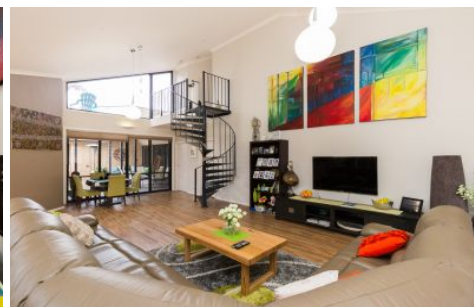




**WES DAVIDSON**  
REAL ESTATE



**23 Major Mitchell Drive Horsham VIC**

4 3 2

Overlooking the Wimmera River, this architecturally-designed home represents a rare opportunity to secure one of Horsham's finest properties. The expansive layout is perfect for entertaining, family gatherings or even finding a secluded spot for yourself. With the formal entrance leading to a large study, it is ideal for the professional. Bathed in natural light and embracing all of its exterior features, the living is both easy and formal. The interior flows through its large windows into an idyllic exterior of alfresco dining and in-ground swimming pool. The upstairs master bedroom offers unrivalled river views, an ensuite, a huge walk-in robe and a private rear deck. Downstairs there are another three bedrooms with an ensuite to one, and a separate sitting room. With too many highlights to mention, only a private inspection will uncover the true extent of what it has to offer.

**Price** : \$ 710,000

**View** : <https://www.wdre.com.au/6517810>



**Wes Davidson**  
**0419820000**



**WES DAVIDSON**  
REAL ESTATE

**23 MAJOR MITCHELL DRIVE**  
HORSHAM



GROUND FLOOR



FIRST FLOOR

FLOOR PLANS/SITE PLANS ARE INTENDED AS A GENERAL GUIDE ONLY. NO REPRESENTATIONS OR WARRANTIES OF ANY NATURE WHATSOEVER ARE GIVEN OR INTENDED AND ANY PERSON USING THIS INFORMATION SHOULD ALWAYS RELY ON THEIR OWN ENQUIRIES.