



WES DAVIDSON
REAL ESTATE



7 Newton Court Horsham VIC

4 2 2

Situated in a quiet court location just off the Wimmera River, is this perfect family or retirement home. Features include lovely spacious kitchen with stainless steel appliances opening to a meals and family room, and separate formal lounge that catches the morning sun. Four bedrooms, master with a walk in robe and ensuite, and ducted heating and cooling ensure comfort living all year round. Large undercover alfresco area, a secure private backyard and a double garage with access through to the yard and huge shed with a newly added storeroom/ office.

Price : \$ 510,000

View : <https://www.wdre.com.au/6517819>

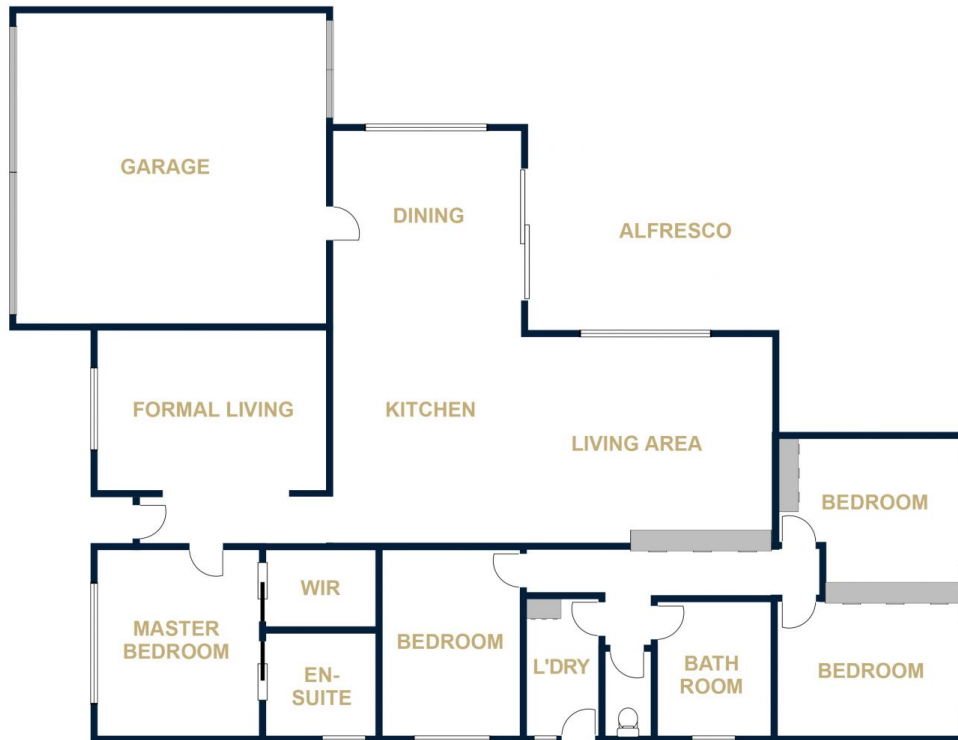


Robert Dolan
0419440617



WES DAVIDSON
REAL ESTATE

7 NEWTON COURT
HORSHAM



FLOOR PLANS/SITE PLANS ARE INTENDED AS A GENERAL GUIDE ONLY. NO REPRESENTATIONS OR WARRANTIES OF ANY NATURE WHATSOEVER ARE GIVEN OR INTENDED AND ANY PERSON USING THIS INFORMATION SHOULD ALWAYS RELY ON THEIR OWN ENQUIRIES.