



4 Menadue Street Horsham VIC

3 2 2

Designed for easy living and water views, this home is as individual as it is stylish. A luxurious formal lounge with an open fireplace and formal dining room overlook the Wimmera River, whilst the open-plan kitchen and living area open to a sun-drenched rear yard with entertaining in mind. Two spacious bedrooms share a beautiful bathroom at one end of the home, with the master bedroom enjoying maximum privacy at the other end and offering an ensuite and walk-in robe. A generous bright study (or fourth bedroom) with large windows looking out to the river adds a sense of style for those working from home or simply wishing they were. Beautifully-presented, meticulously-maintained and oozing charm rarely seen, opportunities along this exclusive waterfront are few and far between.

Inspections by appointment only.

Price : \$ 685,000

View : <https://www.wdre.com.au/6517859>



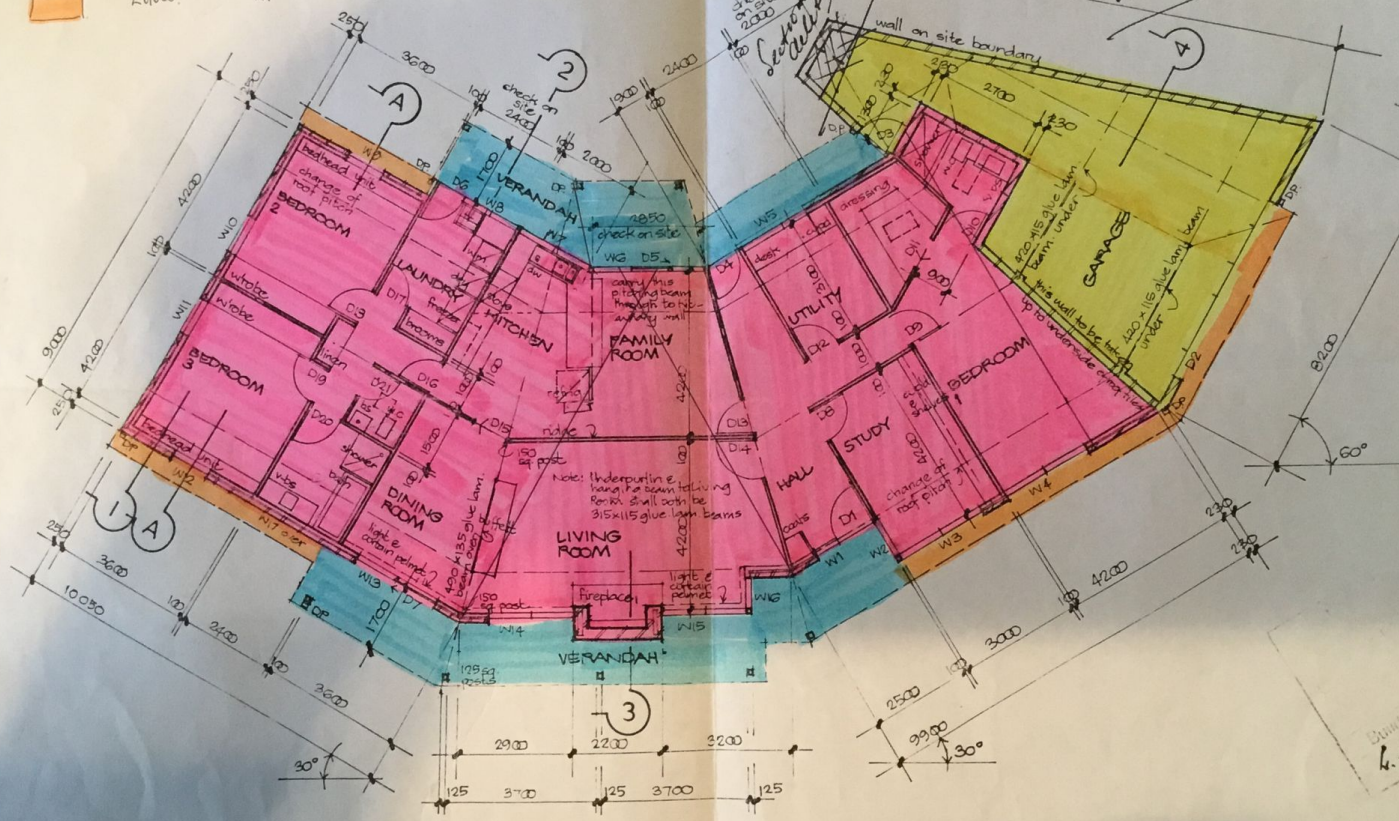
Wes Davidson
0419820000

- Garage/Store $52.57m^2 = 5.65^H$
- Home $207.42m^2 = 22.33^H$
- Verandah $46.17m^2 = 6.26^H$
- Eaves $12.00m^2$

34.24 squares under roof.
(not roof area.)

DR DOWN PIPE

check on site 2400
check on site 2000
wall on site boundary
wall length on boundary 12.0m in length



FLOOR PLAN