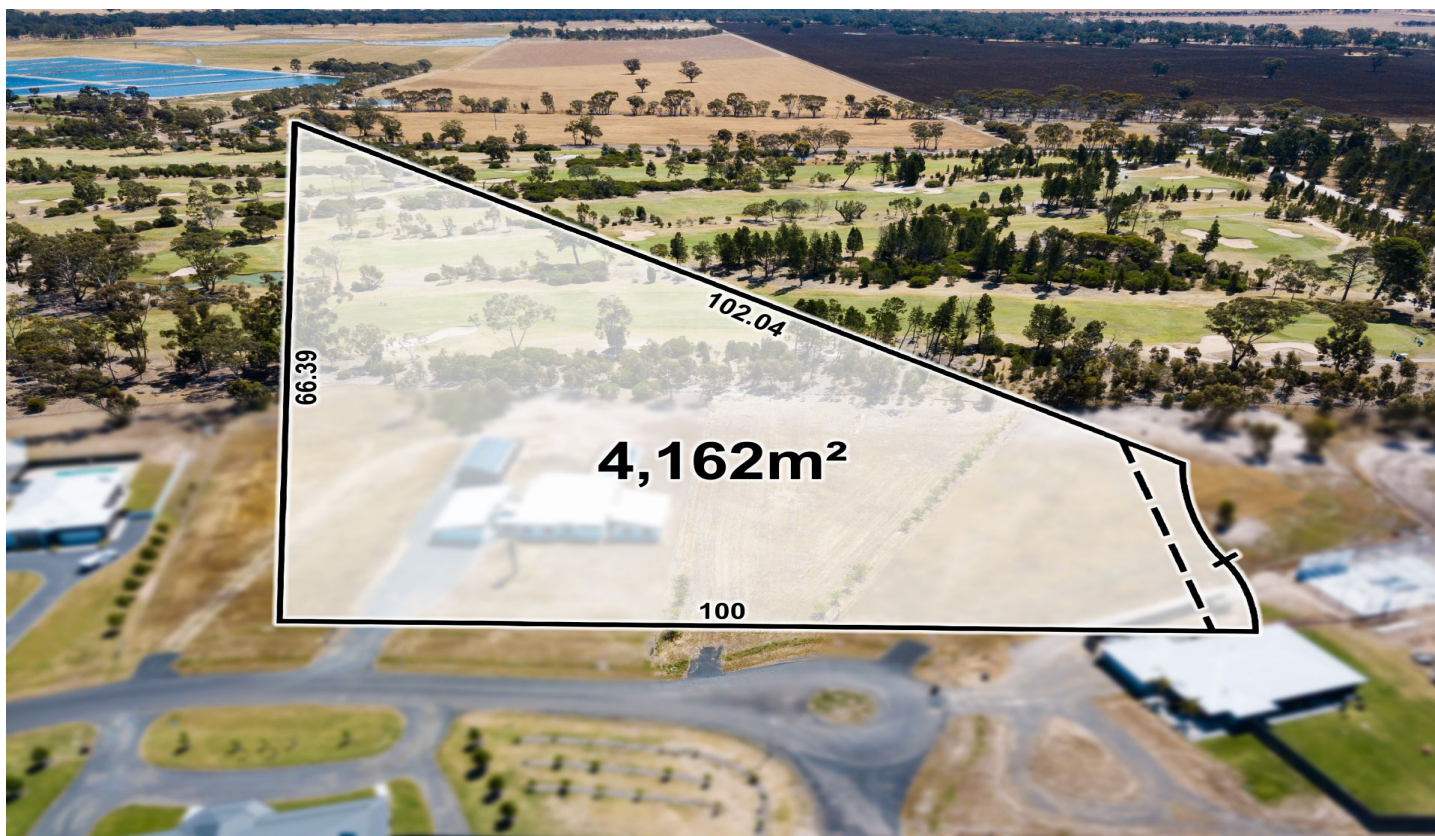




WES DAVIDSON
REAL ESTATE



31 Blue Wren Drive Haven VIC

Directly backing onto the Horsham Golf Course, this approximately 4,162sqm allotment presents a rare opportunity to build your dream home with fairway views. Reticulated sewerage, power and town water are all connected, as well as several taps already being connected to water the trees. This is your chance to secure the country lifestyle only minutes from the Horsham CBD.

Price : \$ 155,000

Land Size : 4162 sqm

View : <https://www.wdre.com.au/6517889>



Wes Davidson
0419820000