



WES DAVIDSON
REAL ESTATE



1A Finlayson Court Horsham VIC

2 1 2

Set on approximately 373sqm, this townhouse is located in a quiet court location of Horsham West that leads onto the banks of the Wimmera River. The well-appointed kitchen has gas hotplates, a dishwasher and ample cupboard space, and is open to the tiled meals area and spacious lounge room. Both of the generously-sized bedrooms have built-in robes and ceiling fans, and there is a separate shower and bath in the bathroom. The home is climate controlled with evaporative air-conditioning, gas heating and in-floor heating. Externally, the low-maintenance yard has ample room to enjoy some privacy. This is the complete package, be it for rental investment or owner-occupation. Quick possession is available.

Price : \$ 285,000

View : <https://www.wdre.com.au/6517921>

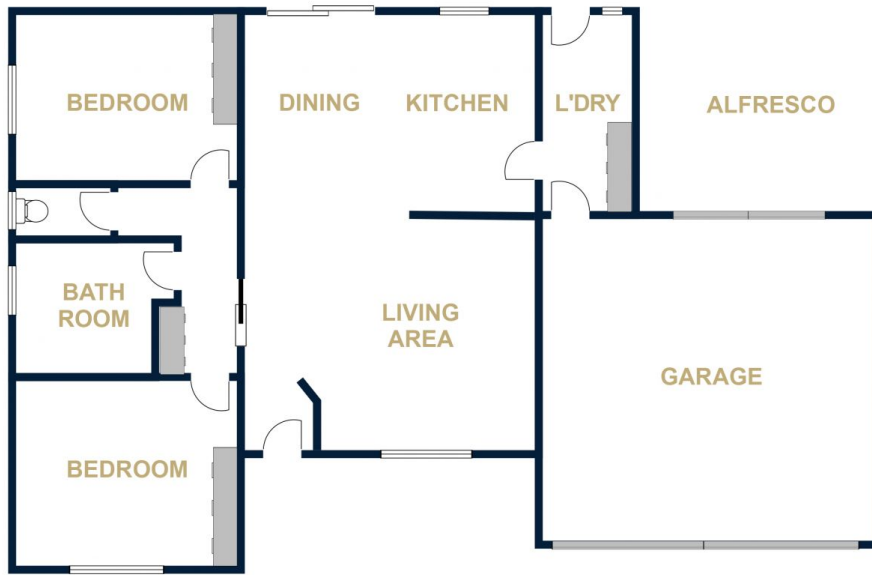


Wes Davidson
0419820000



WES DAVIDSON
REAL ESTATE

1A FINLAYSON COURT
HORSHAM



FLOOR PLANS/SITE PLANS ARE INTENDED AS A GENERAL GUIDE ONLY. NO REPRESENTATIONS OR WARRANTIES OF ANY NATURE WHATSOEVER ARE GIVEN OR INTENDED AND ANY PERSON USING THIS INFORMATION SHOULD ALWAYS RELY ON THEIR OWN ENQUIRIES.