



11 Searle Street Horsham VIC

2 1 2

In the stunning tree-lined Searle Street, this two-bedroom charmer is more than meets the eye.

* Comprising a spacious kitchen with gas cooking and dishwasher and an adjacent dining room.

* Beautiful timber floors flourish the living area which also features a gas log fire and split system heating & cooling unit.

* Two good-sized bedrooms with one offering built-in robes and split system heating & cooling.

* Updated family bathroom with a walk-in shower and modern vanity.

* Low-maintenance yard with side access available via a separate driveway, perfect for trailer or caravan storage.

* Single garage that could also be utilised as a multipurpose room or home gym.

* Land size: Approx. 615m² (Source: Pricerfinder)

* Zoning: General Residential Zone (GRZ1)

Price : \$ 299,000

Land Size : 615 sqm

View : <https://www.wdre.com.au/6531986>



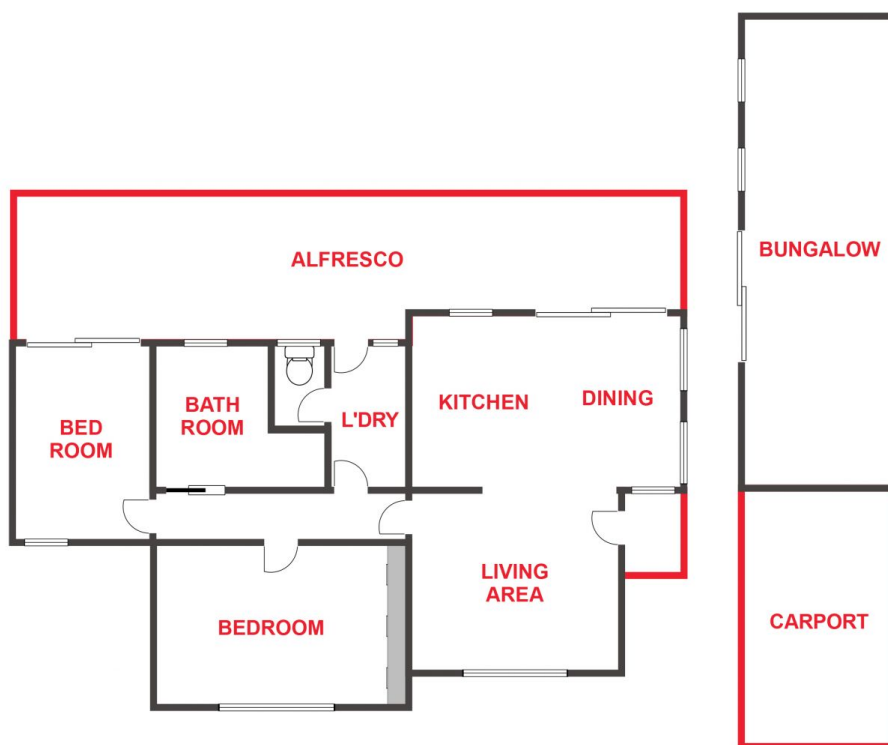
Wes Davidson
(03) 5382 0000



WES DAVIDSON
REAL ESTATE

11 SEARLE STREET

HORSHAM



FLOOR PLANS/SITE PLANS ARE INTENDED AS A GENERAL GUIDE ONLY. NO REPRESENTATIONS OR WARRANTIES OF ANY NATURE WHATSOEVER ARE GIVEN OR INTENDED AND ANY PERSON USING THIS INFORMATION SHOULD ALWAYS RELY ON THEIR OWN ENQUIRIES.