



21 Mardon Drive Horsham VIC



A low-maintenance lifestyle is never far away with this very neat home in a sought-after location.

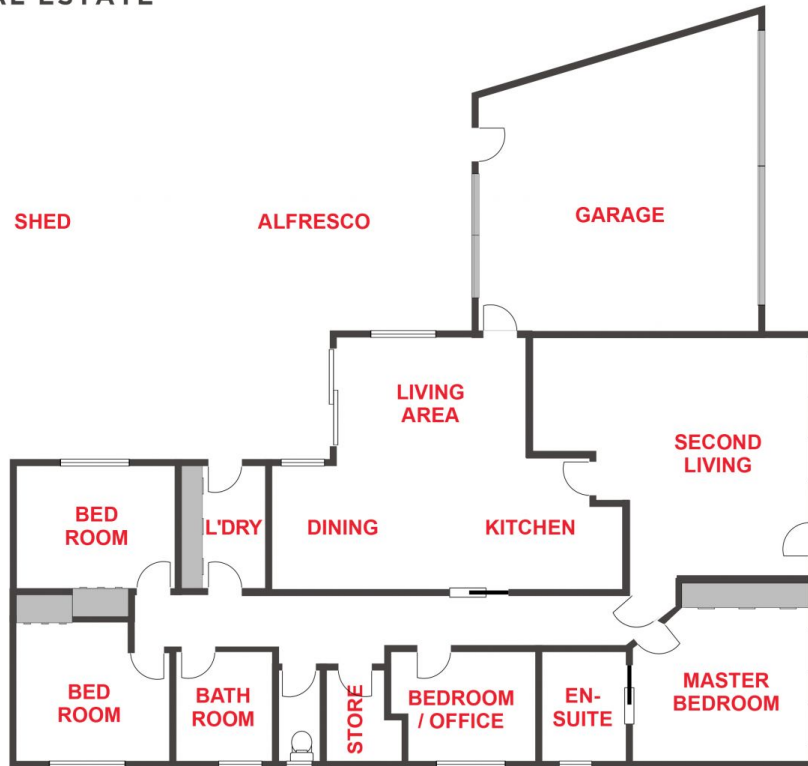
Price : \$659,000

View : <https://www.wdre.com.au/6559163>

- * Prime position overlooking Burnt Creek and within a short walk to the Wimmera River
- * Four bedrooms with the master bedroom offering great views & a roomy ensuite
- * Two separate living areas with gas heating
- * The double garage is higher than average, allowing easy caravan access
- * Huge shed and low-maintenance backyard
- * Land area: Approx. 763sqm
- * Zoning: General Residential Zone (GRZ1)



Robert Dolan
(03) 5382 0000



FLOOR PLANS/SITE PLANS ARE INTENDED AS A GENERAL GUIDE ONLY. NO REPRESENTATIONS OR WARRANTIES OF ANY NATURE WHATSOEVER ARE GIVEN OR INTENDED AND ANY PERSON USING THIS INFORMATION SHOULD ALWAYS RELY ON THEIR OWN ENQUIRIES.