



30A Henry Street Horsham VIC

2 1 1

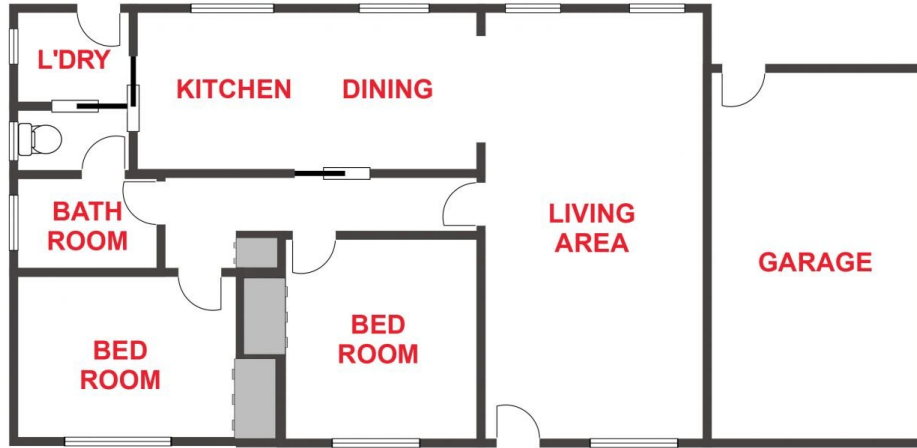
Centrally-located, this low-maintenance unit is perfect for any downsizer or investor looking to expand their portfolio.

- * Both the interior and exterior are low in maintenance
- * Two bedrooms within close reach of a tidy shared bathroom
- * A good-sized living area with direct access to the kitchen
- * Split system heating & cooling as well as a gas heater in the living room
- * Neat kitchen open to dining space
- * Bricked single car garage
- * Land size: Approx. 228sqm (Source: Pricerfinder)
- * Zoning: General Residential Zone (GRZ1)

Price : \$ 240,000
Land Size : 228 sqm
View : <https://www.wdre.com.au/6567706>



Robert Dolan
0419440617



FLOOR PLANS/SITE PLANS ARE INTENDED AS A GENERAL GUIDE ONLY. NO REPRESENTATIONS OR WARRANTIES OF ANY NATURE WHATSOEVER ARE GIVEN OR INTENDED AND ANY PERSON USING THIS INFORMATION SHOULD ALWAYS RELY ON THEIR OWN ENQUIRIES.