



WES DAVIDSON
REAL ESTATE



30 Kalkee Road Horsham VIC

3 1 2

This retro and quirky find is the perfect first home or family home.

- * Spacious kitchen with electric cooking and room for meals
- * Three neutral-toned bedrooms all with built-in robes and ceiling fans
- * A good-sized lounge room with a built-in bookshelf and double glass doors into the kitchen/meals area
- * Gas ducted heating & evaporative cooling, as well as an additional gas wall heater in the lounge
- * The generous yard is bordered with an abundance of fruit trees such as lemon, orange, cherry, and walnut
- * Externally this home also offers a storage room, shed/garage, and single carport
- * Land size: Approx. 837m² (source: Pricerfinder)
- * Zoning: General Residential Zone (GRZ1)

Price : \$ 311,500

Land Size : 837 sqm

View : <https://www.wdre.com.au/6584689>

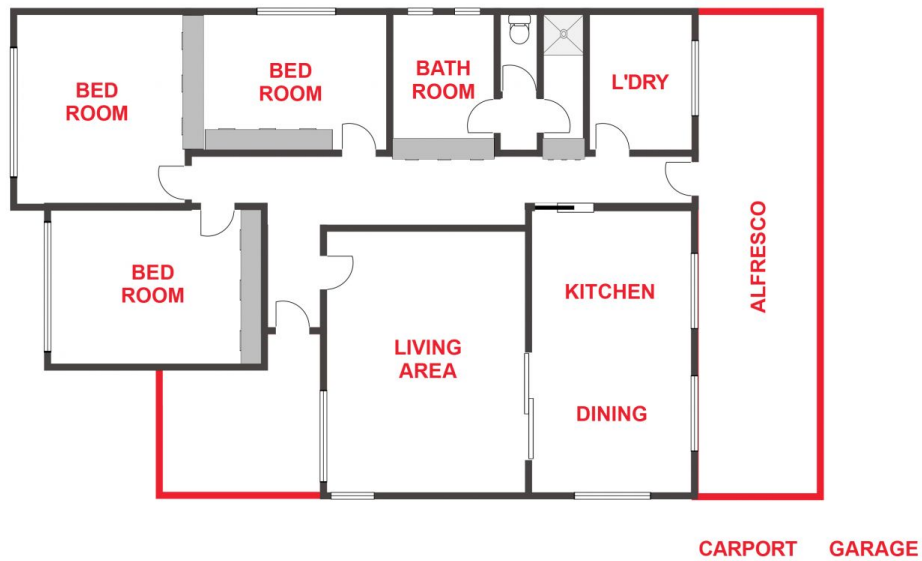


Wes Davidson
0419820000



WES DAVIDSON
REAL ESTATE

30 KALKEE ROAD
HORSHAM



FLOOR PLANS/SITE PLANS ARE INTENDED AS A GENERAL GUIDE ONLY. NO REPRESENTATIONS OR WARRANTIES OF ANY NATURE WHATSOEVER ARE GIVEN OR INTENDED AND ANY PERSON USING THIS INFORMATION SHOULD ALWAYS RELY ON THEIR OWN ENQUIRIES.