

43 McPherson Street Horsham VIC

4 1 2

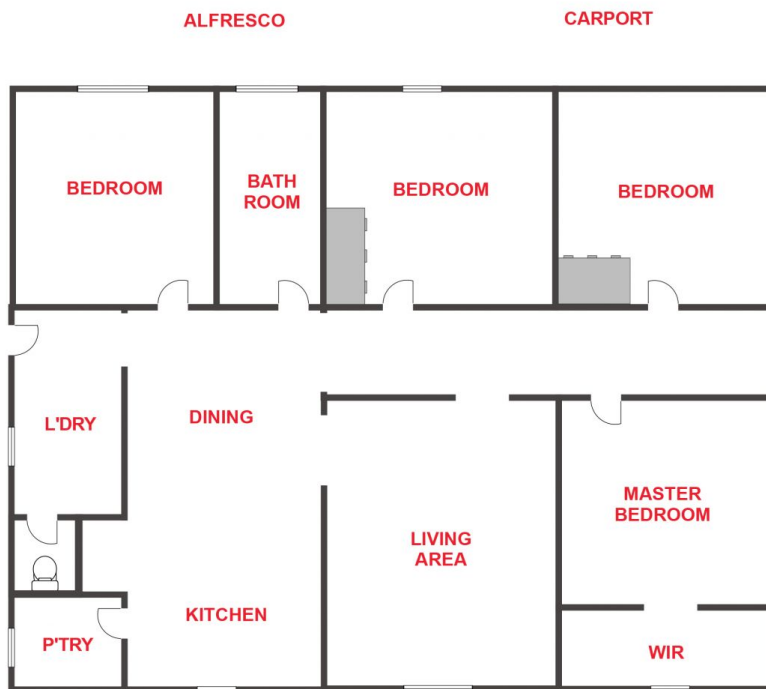
An inviting facade complemented by an abundance of green lawn and gardens, this home is a perfect floor plan for renovators, young families or a great central opportunity for medical practitioners.

Price : \$ 389,000
Land Size : 1030 sqm
View : <https://www.wdre.com.au/6645828>

- * Grand high ceilings and heritage features throughout
- * Generously-sized kitchen with walk-in pantry, dishwasher and room for meals
- * Beautiful lounge complemented with a woodfire heater
- * Ducted heating and cooling to help control your thermostat year-round
- * Four large bedrooms with a walk-in-robe to the master & built-in-robies to two other bedrooms
- * Stunning established yard and gardens, paved firepit and an alfresco area
- * Good shed with rear access and plenty of open space for car parking
- * Land size: Approx 1,030sqm (Source: PriceFinder)
- * Zoning: General Residential Zone (GRZ1)



Wes Davidson
0419 820 000



FLOOR PLANS/SITE PLANS ARE INTENDED AS A GENERAL GUIDE ONLY. NO REPRESENTATIONS OR WARRANTIES OF ANY NATURE WHATSOEVER ARE GIVEN OR INTENDED AND ANY PERSON USING THIS INFORMATION SHOULD ALWAYS RELY ON THEIR OWN ENQUIRIES.