



41 Churchill Road Horsham VIC

4 2 2

Situated in a prime Horsham West location, this brick family home is close to primary and secondary schools.

- * Lovely light-filled kitchen with a separate meals area
- * Two separate living rooms with gas heating and evaporative cooling
- * Four spacious bedrooms with an ensuite to the master
- * Large double lock up garage with a rear door for backyard access
- * Paved outdoor area, tranquil gardens and loads of fruit trees
- * Land size: Approx. 828sqm (Source: PriceFinder)
- * Zoning: General Residential Zoning (GRZ1)

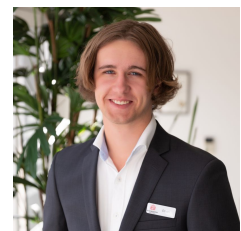
Price : \$ 519,000

Land Size : 828 sqm

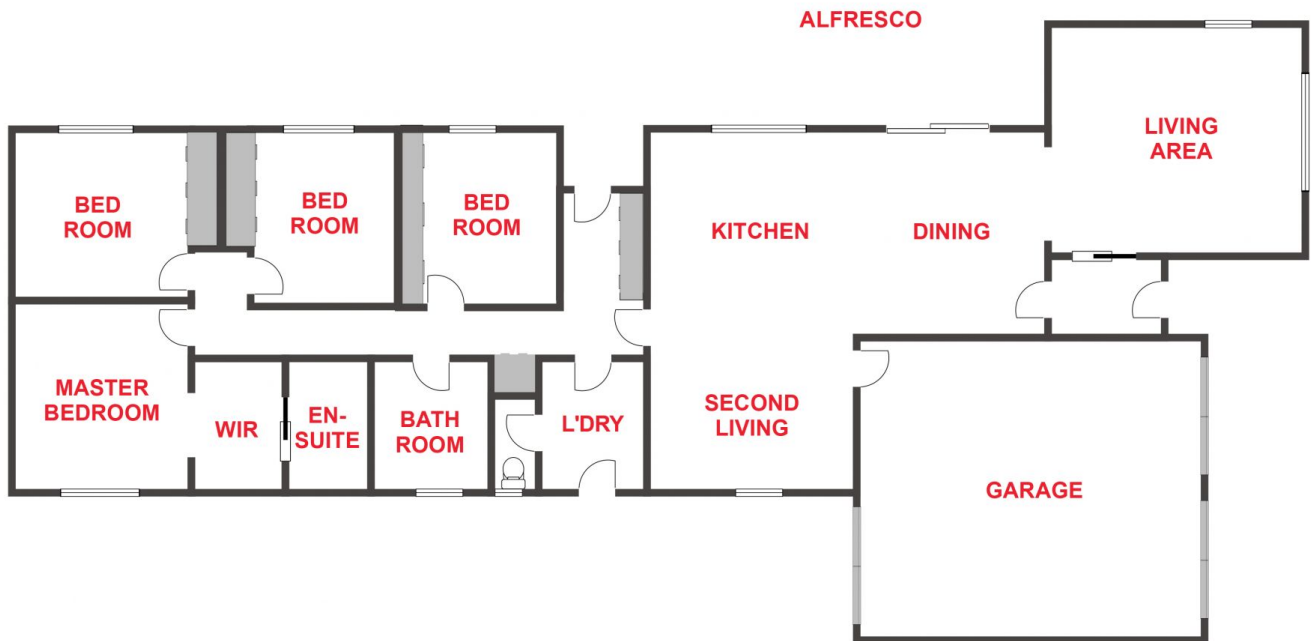
View : <https://www.wdre.com.au/6676227>



Robert Dolan
0419 440 617



Ethan Miller
0427 719 353



FLOOR PLANS/SITE PLANS ARE INTENDED AS A GENERAL GUIDE ONLY. NO REPRESENTATIONS OR WARRANTIES OF ANY NATURE WHATSOEVER ARE GIVEN OR INTENDED AND ANY PERSON USING THIS INFORMATION SHOULD ALWAYS RELY ON THEIR OWN ENQUIRIES.