



**6 Hayes Drive Horsham VIC**

4 2 2

Situated close to the Wimmera River, this brick family home will not disappoint.

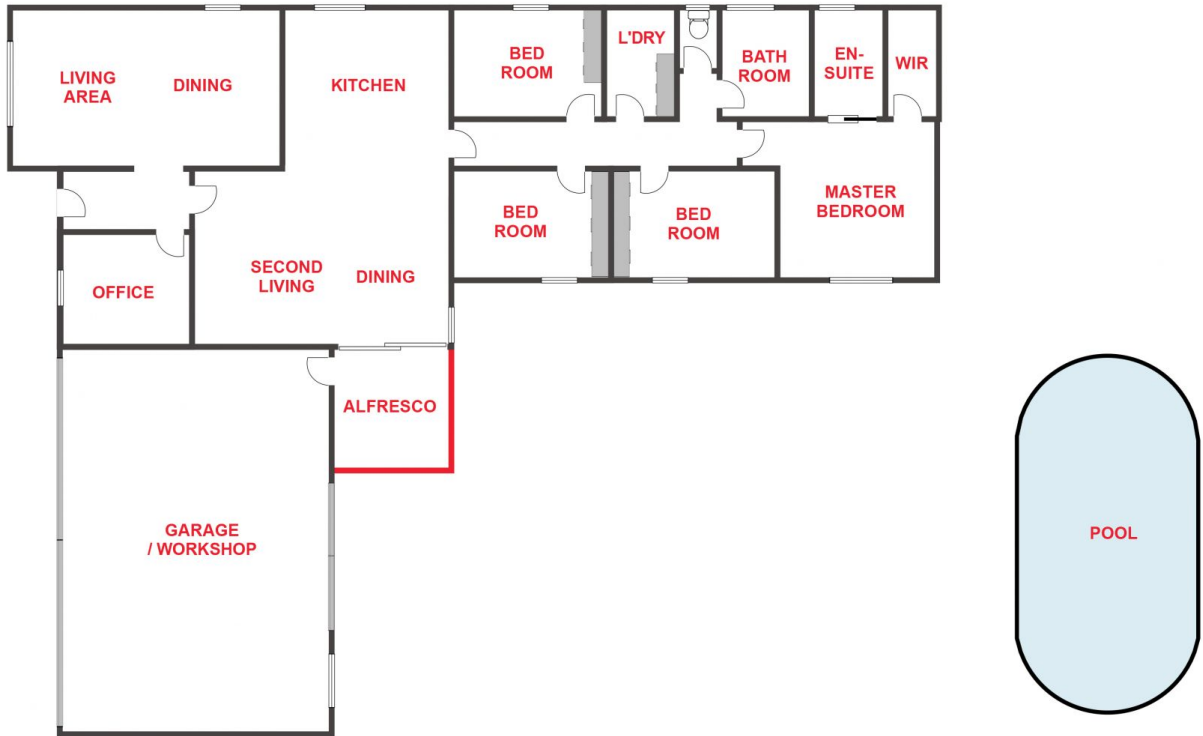
**Land Size** : 999 sqm

**View** : <https://www.wdre.com.au/6696809>

- \* Light-filled kitchen open to a designated dining area
- \* Two lounge rooms both with gas heating
- \* Master bedroom offers walk-in robe and ensuite
- \* Three remaining bedrooms each with built-in robes
- \* Additional separate study to the front of the home
- \* Large established backyard boasting mature fruit trees
- \* Fenced inground swimming pool ready for the warmer weather
- \* Double carport with room for a workshop
- \* Land size: Approx. 999 sqm (Source: Pricerfinder)
- \* General Residential Zoning (GRZ1)



**Wes Davidson**  
**0419820000**



FLOOR PLANS/SITE PLANS ARE INTENDED AS A GENERAL GUIDE ONLY. NO REPRESENTATIONS OR WARRANTIES OF ANY NATURE WHATSOEVER ARE GIVEN OR INTENDED AND ANY PERSON USING THIS INFORMATION SHOULD ALWAYS RELY ON THEIR OWN ENQUIRIES.