



2/136 Dooen Road Horsham VIC

2 1 1

The perfect opportunity to add a low-maintenance, brick veneer unit to your portfolio.

Price : \$ 189,000

Land Size : 170 sqm

View : <https://www.wdre.com.au/6738581>

* Ideal investment property currently returning a rent of \$250 per week, with a lease in place until 18/12/2021

* Carpeted living area with split-system heating & cooling.

* Two good sized bedrooms, both fitted with built-in-robos

* Great low-maintenance yard with garden shed, and single carport

* Recent updates within the last two years include; new kitchen with stainless steel appliances, vinyl floor coverings, and painting.

* Land size: Approx. 170sqm (source: PriceFinder)

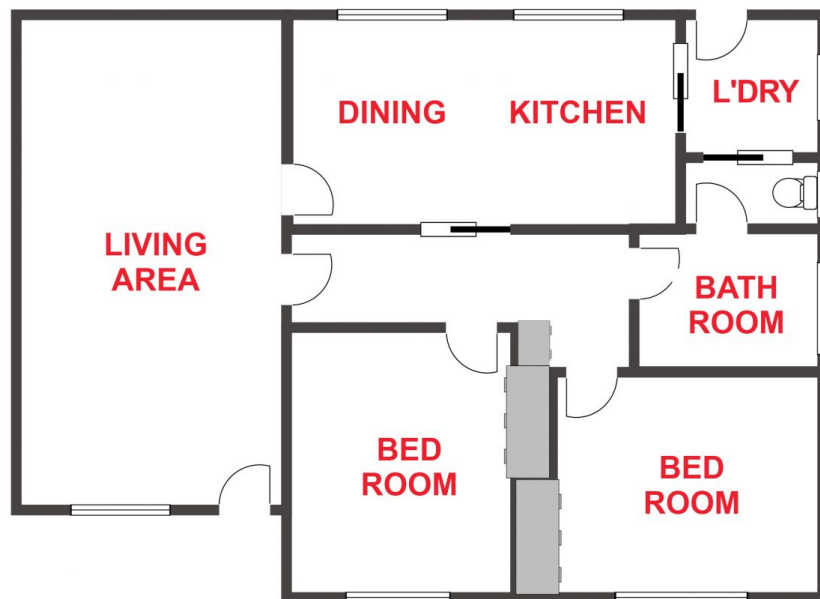
* Zoning: General Residential Zoning (GRZ1)



Robert Dolan
0419440617



Ethan Miller
0427719353



FLOOR PLANS/SITE PLANS ARE INTENDED AS A GENERAL GUIDE ONLY. NO REPRESENTATIONS OR WARRANTIES OF ANY NATURE WHATSOEVER ARE GIVEN OR INTENDED AND ANY PERSON USING THIS INFORMATION SHOULD ALWAYS RELY ON THEIR OWN ENQUIRIES.