



WES DAVIDSON
REAL ESTATE



10 Florence Street Horsham VIC

4 2 2

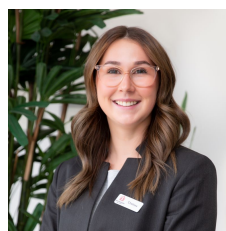
A neat, modern family home that will suit a couple with a growing family or people looking for a little more space.

- * Open plan kitchen with electric appliances overlooking the living/ dining area
- * Two separate living areas
- * Master bedroom with a walk-in robe and ensuite
- * Additional three good sized bedrooms
- * Home office at the entrance of the home
- * Family bathroom with a separate toilet
- * Neat yard as well as a powered shed accessed through the two-car garage
- * Land Size: Approx. 850sqm (source: PriceFinder)
- * Zoning: General Residential Zoning (GRZ1)

Price : \$ 520,000

Land Size : 850 sqm

View : <https://www.wdre.com.au/6970689>



Chelsea Skewes
0448913072