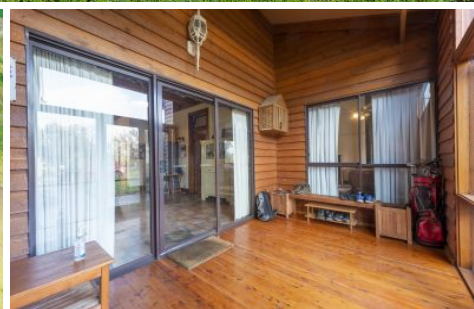




WES DAVIDSON
REAL ESTATE



538 Horsham-Lubeck Road Drung VIC

4 2 2

The lifestyle opportunity you won't want to miss. This charm-filled, western red cedar home is located 15 minutes from Horsham.

- * A neat country-style kitchen with gas cooking and a dishwasher
- * A separate formal dining area
- * Two generous-sized living areas, both with wood heating and beautiful high ceilings
- * Four spacious bedrooms, the master has a large ensuite with a spa bath, shower, and toilet.
- * A neat and central family bathroom and a large laundry with plenty of linen storage
- * Outside is an American-style three-bay shed on concrete and an additional three-bay open shed at the rear of the property.
- * Land size: Approx. 1.86Ha (Source: PriceFinder)
- * Zone: FZ Farming Zoning (FZ)

Price : \$ 570,000
Building Size : 259 sqm
Land Size : 1.86 ha
View : <https://www.wdre.com.au/7109831>



Robert Dolan
0419440617