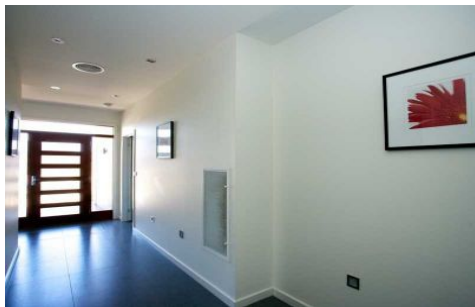
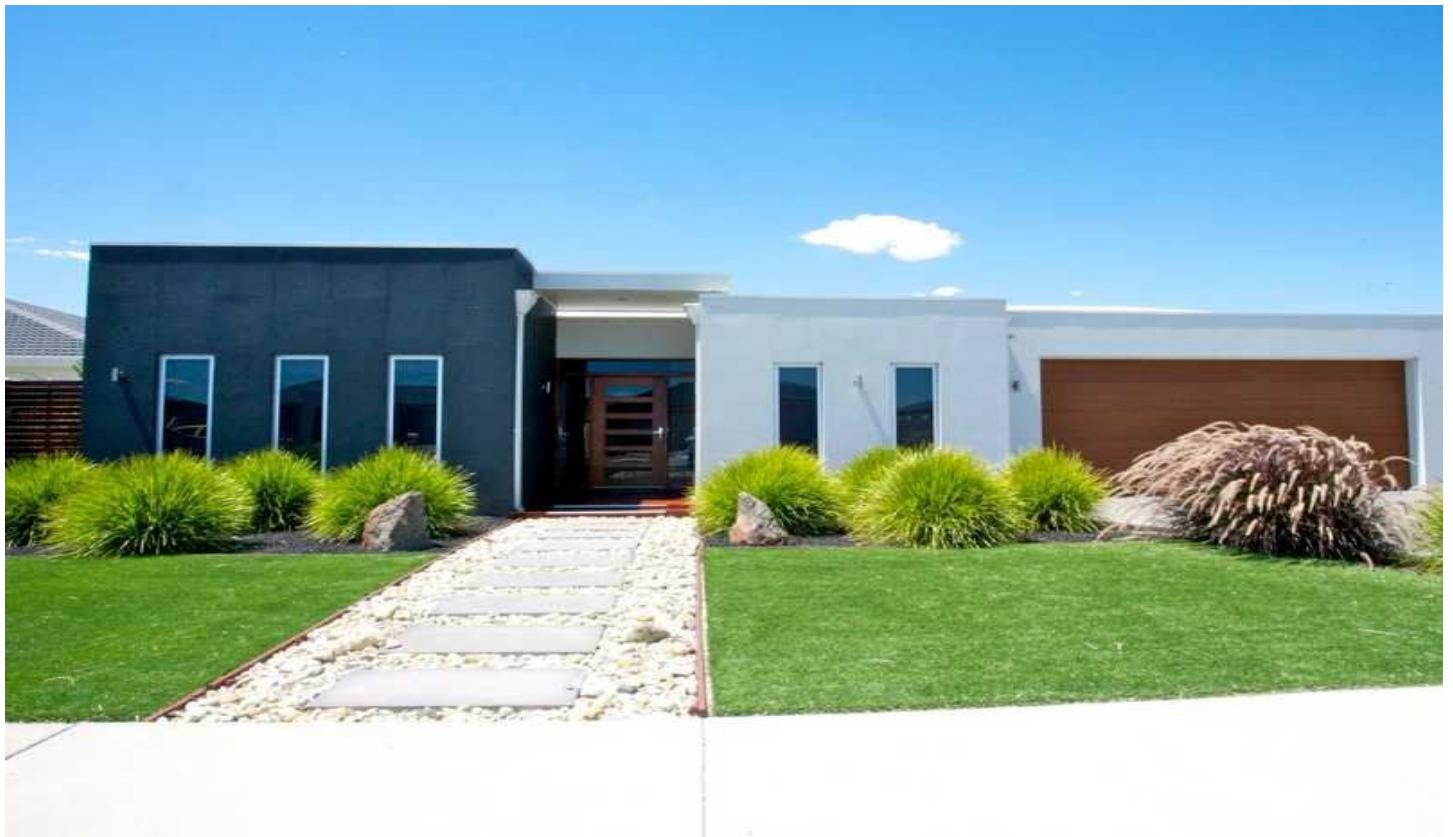




WES DAVIDSON
REAL ESTATE



9 Ashes Court HORSHAM VIC

3 2 2

This family home has modern flair with a touch of class throughout! Features include three spacious bedrooms plus a study, master bedroom with fully tiled en suite and walk in robe, a formal lounge or theatre room, gloss kitchen with stainless steel appliances, glass splash back and walk in pantry with servery bench open to meals and family area. Heating and cooling is a breeze with the ducted split system throughout. Outside there's an alfresco area with timber decking, double garage with direct access to the 7.5m x 12m (approx) shed, kids play area plus two hole mini golf course! So live the dream and buy today.

Price : \$ 469,000

View : <https://www.wdre.com.au/7178126>



Robert Dolan
0419440617