



**21 Errett Street Horsham VIC**

2 1 2

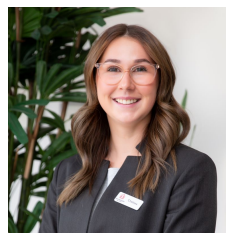
This neat weatherboard property ideal for first-home buyers or investors will be sure to gather plenty of attention.

- \* Spacious timber kitchen with plenty of cupboard space and combined meals area
- \* Private street-facing living room with gas heating
- \* Two well-sized bedrooms, master with a walk-in robe
- \* The family bathroom servicing both bedrooms
- \* Outside is a large undercover area and plenty of shedding and a single carport
- \* Solar panels to keep the electricity cost down
- \* Current tenant paying \$250 per week, on a periodic lease
- \* Land size: Approx. 529sqm (Source: Pricfinder)
- \* Zoning: General Residential Zone (GRZ1)

**Price** : \$ 200,000

**Land Size** : 529 sqm

**View** : <https://www.wdre.com.au/7247541>



**Chelsea Skewes**  
0448913072