



29 Seater Close Horsham VIC



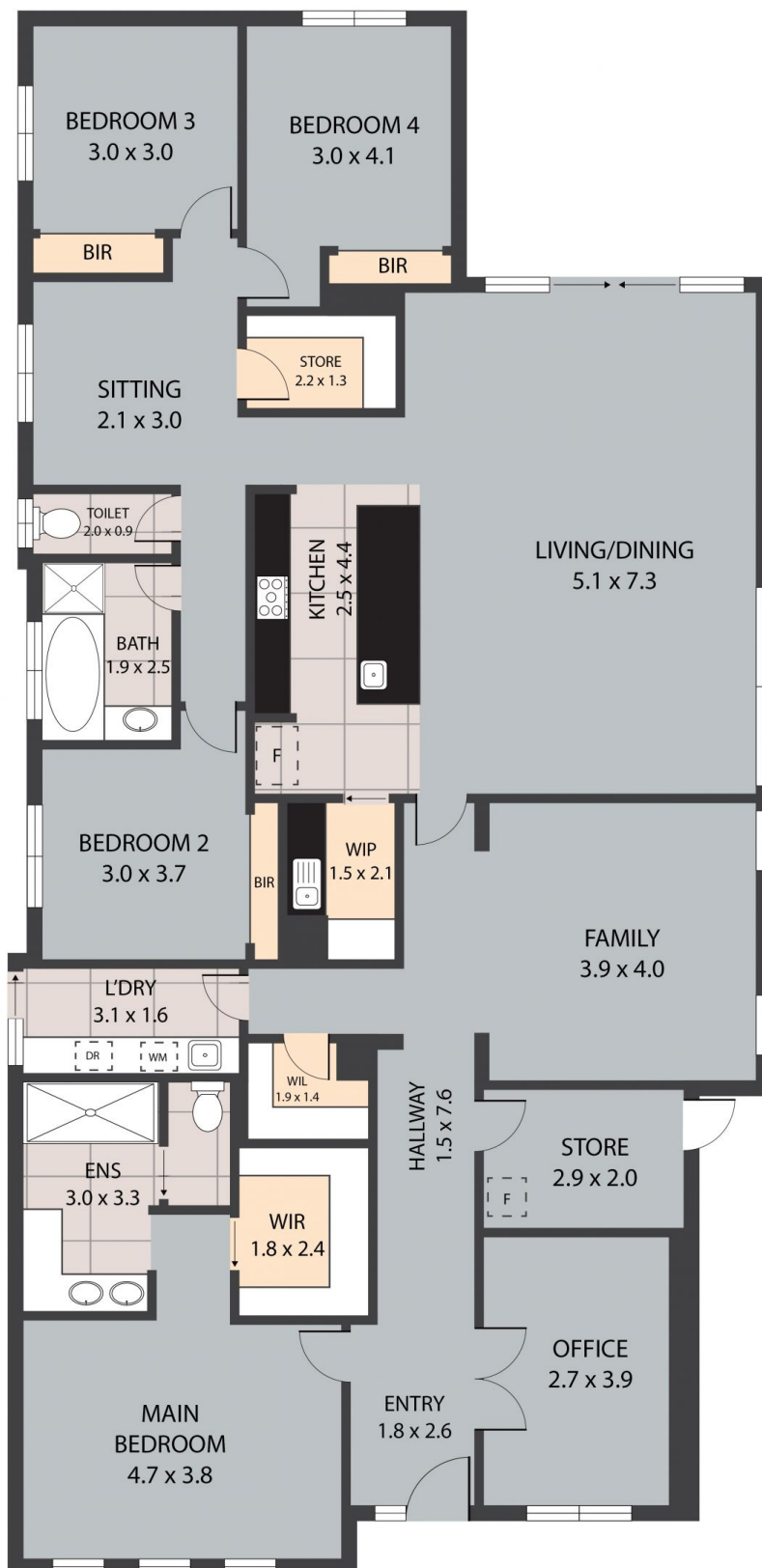
Neat and modern, this home is perfect for anyone looking to jump the queue instead of waiting to build.

- * Open plan kitchen with stainless steel appliances, a butlers pantry and an island bench
- * Three separate living areas providing plenty of space for all the family
- * Four generously sized bedrooms, all with built-in robes, the exception being the master bedroom with a walk-in robe and luxurious ensuite
- * An additional home office/study located at the entrance of the home
- * Neat shared bathroom with a separate toilet
- * Zoned refrigerated aircon and heating
- * Two-car garage with drive-through access to the backyard and direct access inside via a spacious mudroom
- * Outdoor entertaining area with built-in kitchenette, large yard with a brand new 9M X 5.5M colorbond shed to be built
- * Land size: Approx. 1,120sqm (source: PriceFinder)
- * Zoning: General Residential Zone (GRZ1)

Price : \$ 822,500
Land Size : 1120 sqm
View : <https://www.wdre.com.au/7485375>



Robert Dolan
0419440617



29 Seater Close, Horsham 3400

TOTAL APPROX. FLOOR AREA 209 SQ.M

Whilst every attempt has been made to ensure the accuracy of the floor plan contained here, measurements of doors, windows, rooms and any other items are approximate and no responsibility is taken for any error, omission, or misstatement. This plan is for illustrative purposes only and should be used as such by any prospective purchaser.