



1/13 Finlayson Court Horsham VIC

2 1 1

This two-bedroom unit is only a stone's throw from the Wimmera River and with a low-maintenance yard, it is ideal for retirees, downsizers, or first-home buyers.

**Price** : \$ 407,000

**Land Size** : 373 sqm

**View** : <https://www.wdre.com.au/7511698>

\* Currently rented for \$360 per week and in a lease until the 7th of July 2023

\* Open-plan kitchen and dining area with a breakfast bench and large pantry

\* A street-facing living room with large windows allowing all the natural light to fill this space

\* Two bedrooms with built-in robes

\* Neat family bathroom with a separate toilet

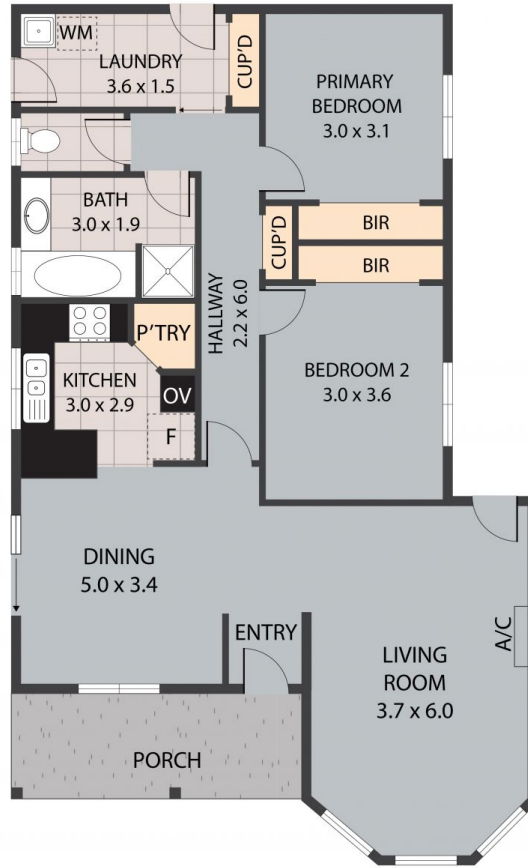
\* Split system heating and cooling and evaporative cooling for year-round comfort

\* Outside is a paved area for entertaining and low-maintenance gardens surrounding the unit

\* Single-car garage with direct access inside through the laundry



**Robert Dolan**  
0419440617



**Unit 1/13 Finlayson Court, Horsham 3400**

TOTAL APPROX. FLOOR AREA 94 SQ.M

Whilst every attempt has been made to ensure the accuracy of the floor plan contained here, measurements of doors, windows, rooms and any other items are approximate and no responsibility is taken for any error, omission, or misstatement. This plan is for illustrative purposes only and should be used as such by any prospective purchaser.