



**21 Mardon Drive Horsham VIC**



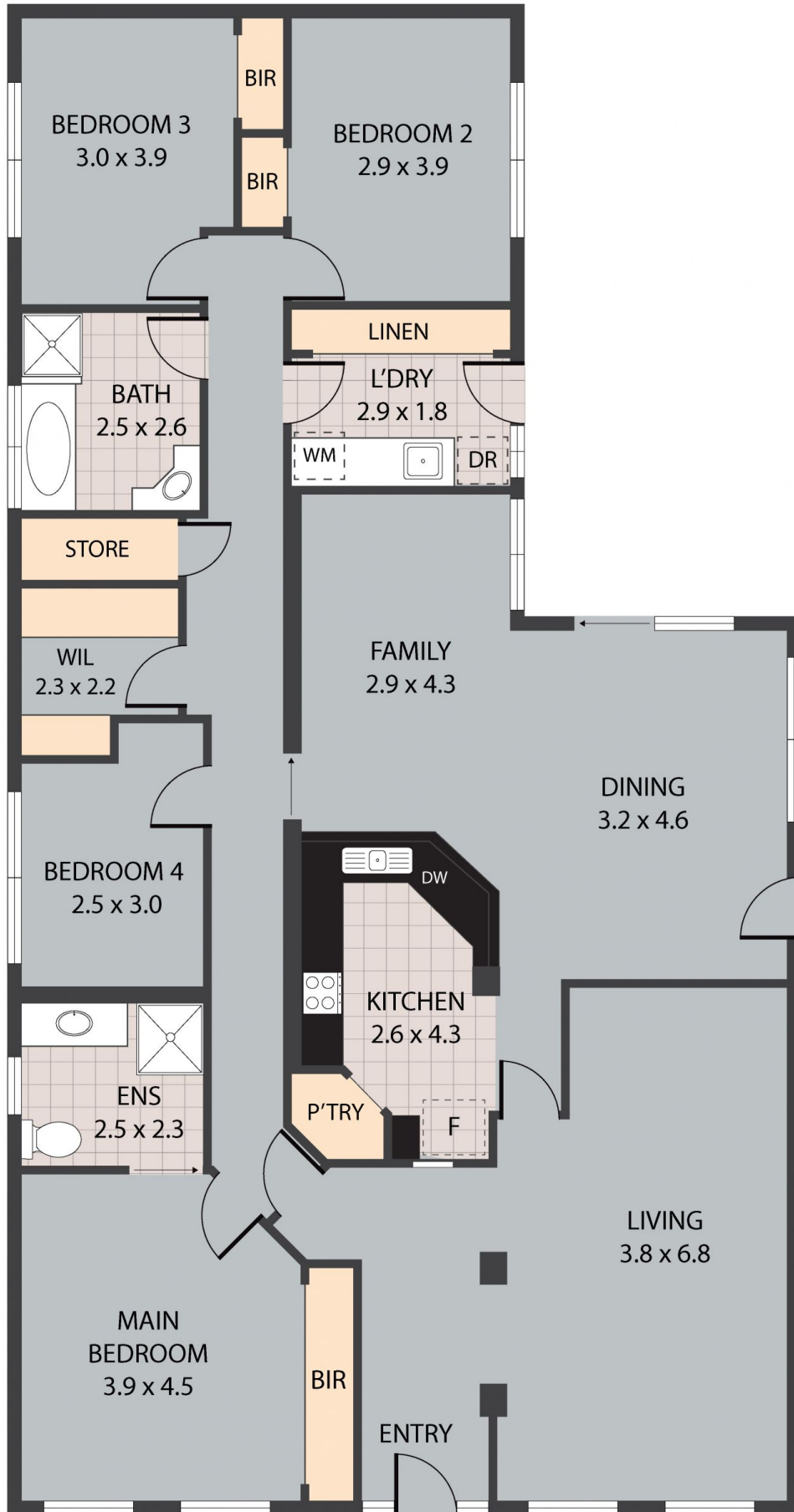
Looking for a low-maintenance home in a prime location? Look no further! This exceptional property has everything you need. Nestled on Mardon Drive, with a stunning view overlooking Burnt Creek, this high-quality home is sure to impress.

**Price** : \$ 649,000  
**Land Size** : 673 sqm  
**View** : <https://www.wdre.com.au/7615218>

- \* Spacious kitchen with a large breakfast bench, ample cupboard space, walk-in pantry, and induction cooktop, making it a dream for cooking enthusiasts
- \* Dining area adjacent to the kitchen with sliding doors leading straight to the undercover outdoor dining area, creating a seamless indoor-outdoor flow for entertaining
- \* Two separate living areas, including one at the front of the home with street-facing windows overlooking the picturesque Burnt Creek
- \* Three spacious bedrooms, all equipped with built-in robes for convenient storage. The master bedroom enjoys the luxury of an ensuite, ensuring privacy and comfort
- \* An additional fourth bedroom or home office/study with built-in shelving



**Robert Dolan**  
**0419440617**



21 Mardon Drive, Horsham 3400

TOTAL APPROX. FLOOR AREA 190 SQ.FT

Whilst every attempt has been made to ensure the accuracy of the floor plan contained here, measurements of doors, windows, rooms and any other items are approximate and no responsibility is taken for any error, omission, or misstatement. This plan is for illustrative purposes only and should be used as such by any prospective purchaser.