



2 Matthews Court Horsham VIC

3 2 2

This three-bedroom family home, nestled in a quiet court, is an excellent choice for those with a growing family.

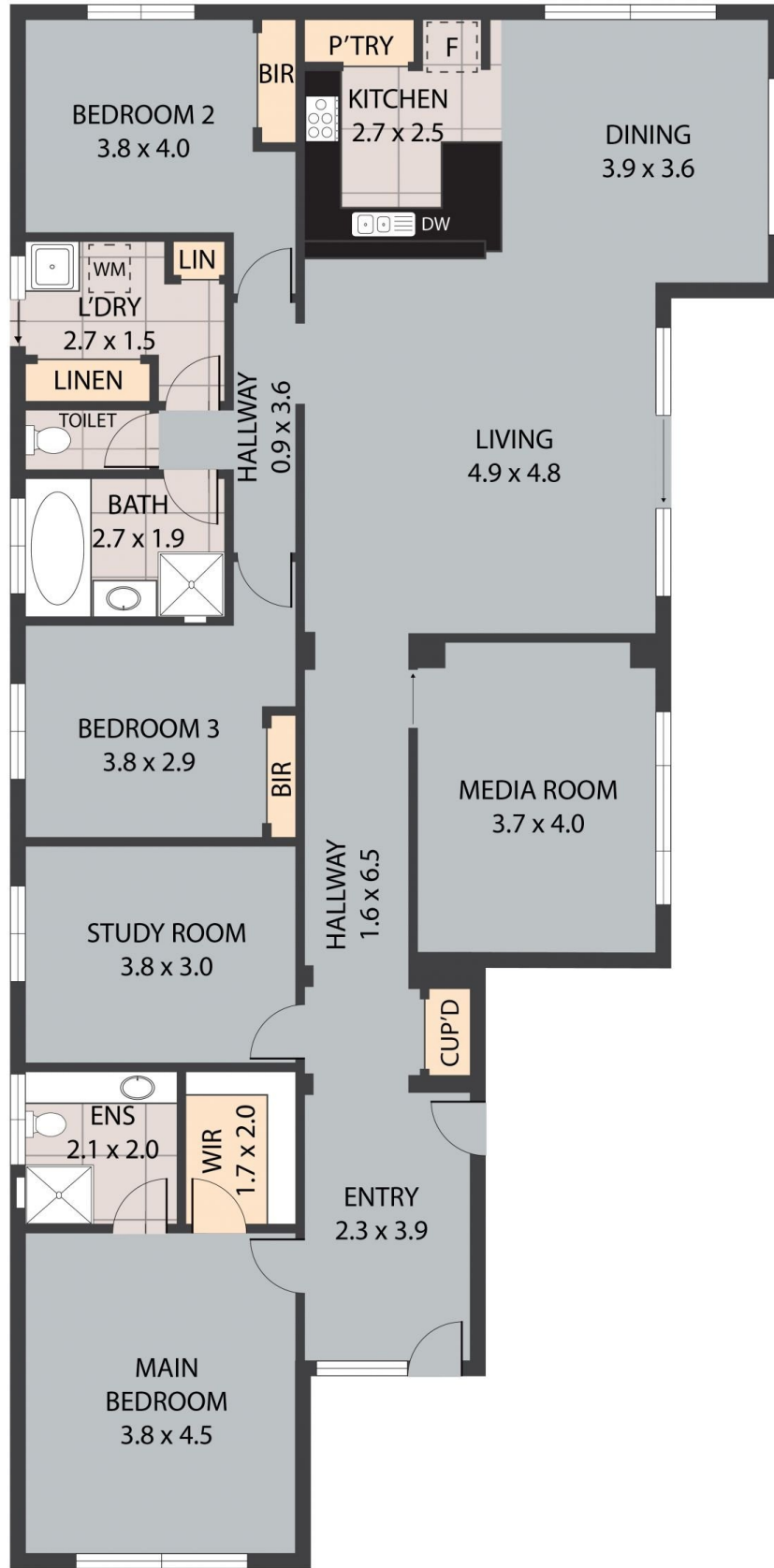
Price : \$495,000

View : <https://www.wdre.com.au/7988947>

- *The spacious master bedroom features a walk-in robe and a recently renovated ensuite. The remaining two bedrooms offer built-in robes.
- *Recently renovated family bathroom with a separate toilet.
- *Enjoy the light-filled open plan kitchen, dining, and living area that has access to the outdoor entertaining area
- *The kitchen boasts ample bench space and gas cooking facilities.
- *A second living area located just off the lounge, that is currently serving as an additional bedroom.
- *A spacious home office/study, currently utilized as a bedroom.
- *Outside, there's an undercover entertaining area, a low-maintenance backyard, a smaller shed, and a second expansive shed with power connected and dual roller door access
- * Land size: Approx. 846 sqm (Source: PriceFinder)
- * Zoning: General Residential Zone (GRZ1)



Robert Dolan
0419440617



2 Matthews Court, Horsham 3400ton, New Zealand

TOTAL APPROX. FLOOR AREA 169 SQ.M

Whilst every attempt has been made to ensure the accuracy of the floor plan contained here, measurements of doors, windows, rooms and any other items are approximate and no responsibility is taken for any error, omission, or misstatement. This plan is for illustrative purposes only and should be used as such by any prospective purchaser.