



**2 Jory Street Natimuk VIC**



Discover a rare opportunity to own a piece of history! This charming historic building, now operating as a café, offers not only a business opportunity but also a cozy one-bedroom unit situated on a large block in the heart of Natimuk. Whether you're an aspiring café owner, an investor, or someone with a vision for development, this property promises endless potential.

**Price** : \$399,000  
**Land Size** : 1035 sqm  
**View** : <https://www.wdre.com.au/8085447>

**Property Highlights:**

\*Historic Charm: Step into a beautiful historic building that exudes character and a unique atmosphere, attracting both locals and tourists.

\*Thriving Café: Benefit from an established café with a loyal customer base. The inviting interior and delightful ambiance make it a favorite spot for coffee lovers and food enthusiasts.

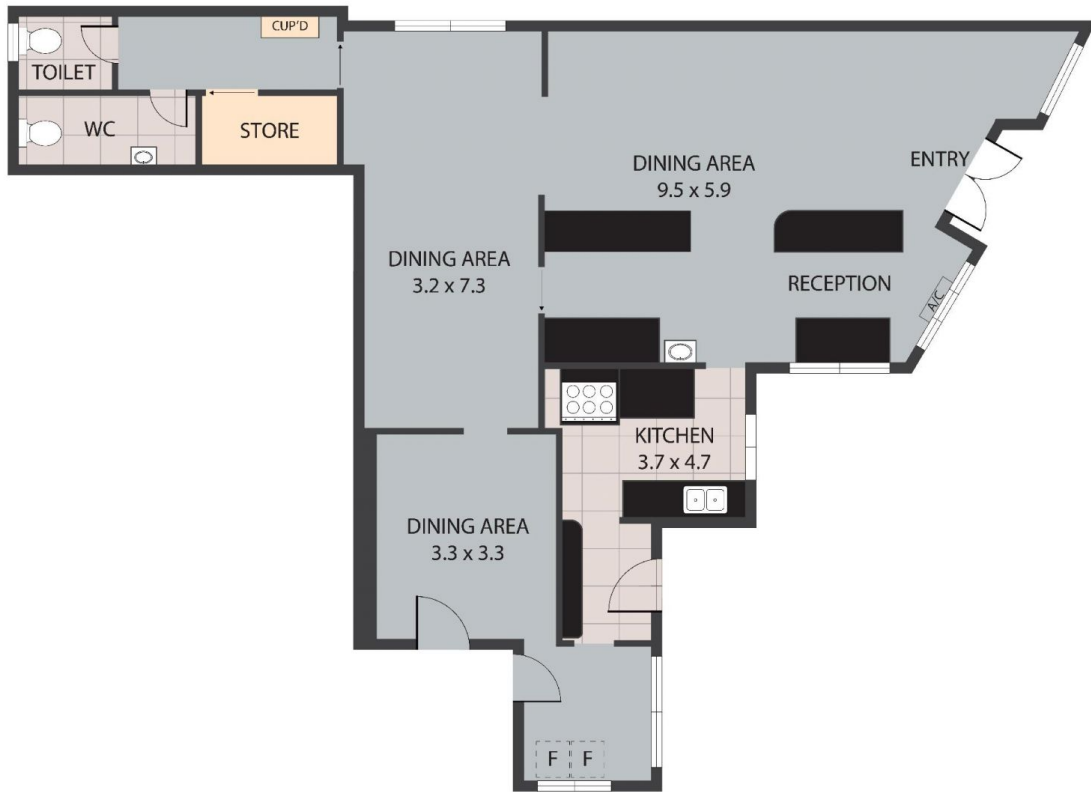
\* One-Bedroom Unit: Located behind the café, the one-bedroom unit provides comfortable living quarters or an additional rental income stream.



**Wes Davidson**  
0419820000

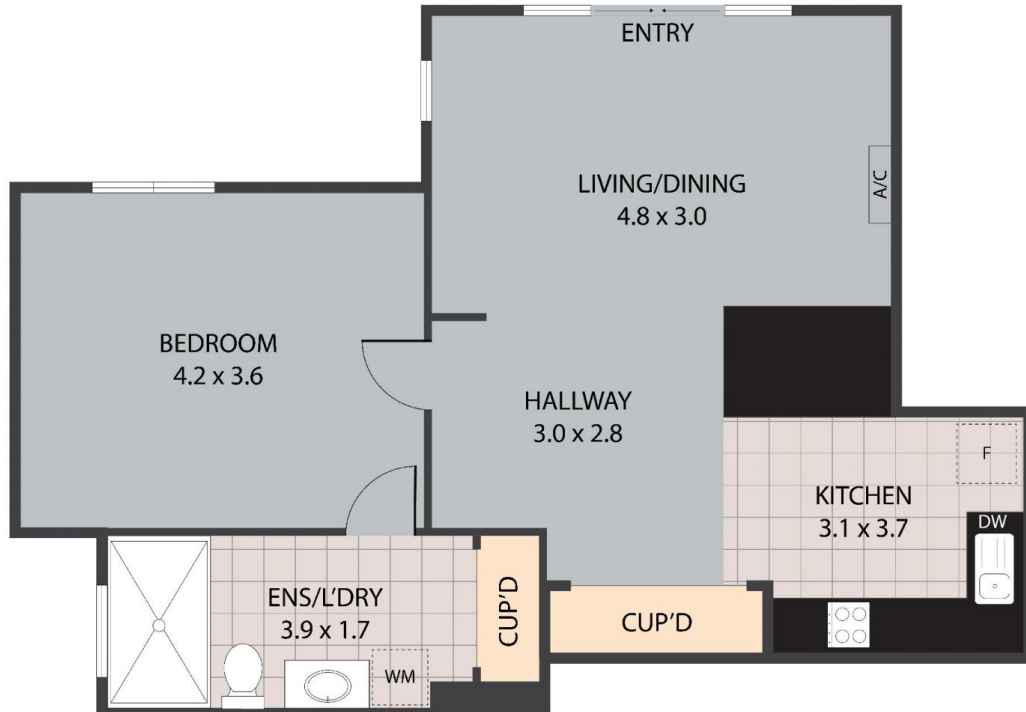


**Jorja Hughes**  
0498110948



2 Jory Street, Natimuk 3409  
TOTAL APPROX. FLOOR AREA 120 SQ.M

Whilst every attempt has been made to ensure the accuracy of the floor plan contained here, measurements of doors, windows, rooms and any other items are approximate and no responsibility is taken for any error, omission, or misstatement. This plan is for illustrative purposes only and should be used as such by any prospective purchaser.



2 Jory Street, Natimuk 3409  
TOTAL APPROX. FLOOR AREA 56 SQ.M

Whilst every attempt has been made to ensure the accuracy of the floor plan contained here, measurements of doors, windows, rooms and any other items are approximate and no responsibility is taken for any error, omission, or misstatement. This plan is for illustrative purposes only and should be used as such by any prospective purchaser.